



# Dylox<sup>®</sup> 420 SL

## TURF AND ORNAMENTAL INSECTICIDE

For control of listed insects through applications to landscape turf and to soil at the bases of landscape flowers, shrubs, and trees.

For turf use on golf courses and on recreational and residential turf areas only.

For Control of White Grubs, Mole Crickets, Sod Webworms, Cutworms and Other Listed Pests of Turfgrass.

Controls damaging insects above and below the soil surface.

### ACTIVE INGREDIENT:

\*Trichlorfon, Dimethyl (2,2,2-trichloro-1

-hydroxy-ethyl)phosphonate .....37.3%

**OTHER INGREDIENT** .....62.7%

**TOTAL** .....100.0%

\*3.5 lb trichlorfon per gal of formulated product

EPA Reg. No. 5481-643-432

EPA Est. No. indicated by 3rd and 4th characters of the batch number on this package.

(77) = 070989-MO-1

(AX) = 5481-AL-1

**STOP - READ THE LABEL BEFORE USE.**

**KEEP OUT OF REACH OF CHILDREN**

# CAUTION

## White Grubs

For **MEDICAL** And **TRANSPORTATION**

Emergencies **ONLY** Call 24 Hours A Day

1-800-334-7577

For **PRODUCT USE** Information Call

1-800-331-2867

See Back Panel for First Aid Instructions and Booklet for Complete Precautionary Statements and Directions for Use.

**Net Contents**

# 2.5 Gallons

86248913

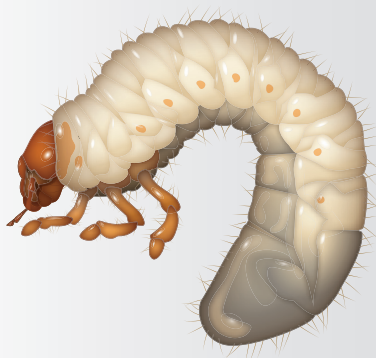
160509AV2

14171a-20140918

### PRODUCED FOR:

Bayer Environmental Science  
A Division of Bayer CropScience LP  
5000 CentreGreen Way, Suite 400  
Cary, NC 27513  
1-800-331-2867

# Bayer



### **FIRST AID**

**Contains an organophosphate that inhibits cholinesterase.**

<b>If swallowed:</b>	<ul style="list-style-type: none"><li>• Call a poison control center or doctor immediately for treatment advice.</li><li>• Have person sip a glass of water if able to swallow.</li><li>• Do not induce vomiting unless told to do so by a poison control center or doctor.</li><li>• Do not give anything by mouth to an unconscious person.</li></ul>
<b>If in eyes:</b>	<ul style="list-style-type: none"><li>• Hold eye open and rinse slowly and gently with water for 15 to 20 minutes.</li><li>• Remove contact lenses, if present, after the first 5 minutes, then continue rinsing eye.</li><li>• Call a poison control center or doctor for treatment advice.</li></ul>
<b>If on skin:</b>	<ul style="list-style-type: none"><li>• Take off contaminated clothing.</li><li>• Rinse skin immediately with plenty of water for 15 to 20 minutes.</li><li>• Call a poison control center or doctor for treatment advice.</li></ul>

In case of emergency call toll free the Bayer Environmental Science Emergency Response Telephone No. 1-800-334-7577. Have a product container or label with you when calling a poison control center or doctor, or going for treatment.

Note to Physician: Prolonged exposure will cause cholinesterase depression. Atropine Sulfate is antidotal. 2-PAM is also antidotal and may be administered in conjunction with atropine.

## PRECAUTIONARY STATEMENTS

### HAZARDS TO HUMANS AND DOMESTIC ANIMALS

#### CAUTION

Harmful if swallowed or absorbed through skin. Causes moderate eye irritation. Do not take internally. Avoid contact with eyes, skin, or clothing. Do not get in eyes or on clothing. Wash thoroughly with soap and water after handling and before eating, drinking, chewing gum, using tobacco, or using the toilet. Remove and wash contaminated clothing before reuse.

#### PERSONAL PROTECTIVE EQUIPMENT (PPE)

Some materials that are chemical-resistant to this product are natural rubber, barrier laminate, butyl rubber, nitrile rubber, neoprene rubber, and polyvinylchloride (PVC). For more options, follow the instructions for category C on an EPA chemical-resistant category chart.

#### Mixers, loaders, applicators, and other handlers must wear:

- Long-sleeved shirt and long pants
- Shoes plus socks
- Chemical-resistant gloves

Follow manufacturer's instructions for cleaning/maintaining PPE. If no such instructions for washables exist, use detergent and hot water. Keep and wash PPE separately from other laundry.

**Engineering Control Statements:** When handlers use closed systems or enclosed cabs, in a manner that meets the requirements listed in the Worker Protection Standard (WPS) for agricultural pesticides [40 CFR 170.240(d)(4-6)], the handler PPE requirements may be reduced or modified as specified in the WPS.

## USER SAFETY RECOMMENDATIONS

#### User should:

- Wash hands before eating, drinking, chewing gum, using tobacco, or using the toilet.
- Remove clothing/PPE immediately if pesticide gets inside. Then wash thoroughly and put on clean clothing.
- Remove PPE immediately after handling this product. Wash the outside of gloves before removing. As soon as possible, wash thoroughly and change into clean clothing.

## ENVIRONMENTAL HAZARDS

This pesticide is toxic to fish and wildlife and is extremely toxic to aquatic invertebrates. Apply the product in strict accordance with label directions. For terrestrial uses, do not apply directly to water. Do not contaminate water by cleaning of equipment or disposal of waste.

## DIRECTIONS FOR USE

**It is a violation of federal law to use this product in a manner inconsistent with its labeling.**

Do not apply this product in a way that will contact workers or other persons, either directly or through drift. Only protected handlers may be in the area during application. For any requirements specific to your State or Tribe, consult the agency responsible for pesticide regulations.

## RESTRICTIONS

- Use this product only as directed by its label. Do not apply this product to sites not listed in the APPLICATIONS table.
- Do not allow people or pets to enter the treated area until sprays have dried.
- Aerial application is prohibited.
- Do not apply this product through any type of chemigation system.
- Do not use this product on turf being grown for sale or other commercial use as sod. Do not use this product on turf being grown for commercial seed production or for research purposes except for research involving use of this product that is consistent with this label.
- Do not apply this product to crops grown for food or forage.
- Do not make foliar applications to trees, shrubs, bushes, or flowers. Ornamental plants may be treated only by applying spray to the soil at the base of the plant.
- For applications to turf, limit the number of applications to 3 per calendar year with minimum re-treatment intervals of 7 days.

*(continued)*

#### **RESTRICTIONS** *(continued)*

- Do not apply more than 24.5 lbs of active ingredient per acre per year for controlling grubs and mole crickets.
- Do not apply more than 16.2 lbs of active ingredient per acre per year for controlling surface feeding insects.
- Post-application irrigation is required.
- Do not apply when turf grass areas are water-logged or the soil is saturated with water (i.e. will not allow penetration into the root zone of the plant). Do not apply to the point of run-off or puddling of irrigation water following application.
- Do not use this product on plants being grown for sale or other commercial use.

#### **ADDITIONAL RESTRICTIONS FOR GOLF COURSES**

- Do not apply within 25 feet of lakes, reservoirs, rivers, permanent streams, marshes, natural ponds, or estuaries.
- Broadcast use is limited to tees and greens. Use on fairways is limited to spot treatment.
- Post-application watering-in is required.

### **SPRAY DRIFT MANAGEMENT**

Do not allow spray to drift from the application site and contact people or structures that people occupy at any time. Do not allow spray to contact property associated with structures that people occupy or parks and recreation areas, nontarget crops, aquatic and wetland areas, woodlands, pastures, rangelands, or animals. Do not apply under circumstances where drift is possible to unprotected persons, or to food, forage, or crops intended for sale, use, or consumption.

For ground boom applications, apply with nozzle height no more than 4 feet above the ground or crop canopy and when wind speed is 10 mph or less at the application site, as measured by an anemometer. Use coarse or coarser spray according to ASABE S-572 definition for standard nozzles or VMD for spinning atomizer nozzles.

The applicator must employ all other measures necessary to control drift.

**NOTES:** Spray droplets from applications of DYLOX 420 SL Turf and Ornamental Insecticide may cause spotting of paint finishes on aluminum and steel siding, automobiles, trucks and tractors. Do not allow spray droplets to contact metal painted surfaces. If accidental exposure does occur, thoroughly wash the painted surface immediately after exposure.

DYLOX 420 SL Turf and Ornamental Insecticide is a soluble concentrate, which dissolves readily in water and is suitable for use in all power-operated ground sprayers.

Use specified dosage of DYLOX 420 SL Turf and Ornamental Insecticide in the amount of water necessary to give complete coverage of soil or turf. The type of equipment used will affect the concentration of product needed.

## MIXING INSTRUCTIONS

### COMPATIBILITY / MIXING / ORDER-OF-MIXING

Observe all cautions and limitations on labeling of all products used in mixtures.

Dylox 420 SL Turf and Ornamental Insecticide is physically and biologically compatible with many registered pesticides and fertilizers or micronutrients. When considering mixing Dylox 420 SL Turf and Ornamental Insecticide with other pesticides, or other additives, first contact your supplier for advice. For further information, contact your local Bayer representative.

If your supplier and Bayer representative have no experience with the combination you are considering, conduct a test to determine physical compatibility. To determine physical compatibility, add the prescribed proportions of each chemical with the same proportion of water as will be present in the chemical supply tank, into a suitable container, mix thoroughly, and allow the mixture to stand for five minutes. If the combination remains mixed, or can be readily remixed, the mixture is considered physically compatible.

The proper mixing procedure for Dylox 420 SL Turf and Ornamental Insecticide alone or in tank mix combinations with other pesticides is:

- 1) Fill the spray tank 1/4 to 1/3 full with clean water;
- 2) While recirculating and with the agitator running, add any products in PVA bags. Allow time for thorough mixing;
- 3) Continue to fill spray tank with water until 1/2 full;
- 4) Add any other wettable powder (WP) or wettable granules (WG) products;
- 5) Add any "flowable" (FL or SC) type products;
- 6) Allow enough time for thorough mixing of each product added to tank;
- 7) Add the required amount of Dylox 420 SL Turf and Ornamental Insecticide, and any other 'SL'-type products; emulsifiable concentrates (EC), fertilizers, micronutrients, spray adjuvants;
- 8) Fill spray tank to desired level and maintain constant agitation to ensure uniformity of spray mixture.

**NOTE:** Do not use PVA packets in a tank mix with products that contain boron or release free chlorine. The resultant reaction of PVA and boron or free chlorine is a plastic that is not soluble in water or solvents.

APPLICATIONS		
SITE	INSECT	APPLICATION RATE
Landscape Ornamentals (including flowers, shrubs, and trees) and Recreational Lawns & Turf	Cutworms Armyworms Webworms, incl. sod webworm Cranberry girdler	4.6-6.9 fl oz per 1,000 sq ft (200-300 fl oz per acre)
	Annual bluegrass weevil larvae	5.2-6.9 fl oz per 1,000 sq ft (225-300 fl oz per acre)
	Annual bluegrass weevil (adults) Billbug larvae Mole crickets Chinch bugs White grubs (including larvae of Asiatic garden beetle, black turf-grass atenioid, European chafer, green June beetle, Japanese beetle, <i>Aphodius</i> spp., May or June beetles ( <i>Phyllophaga</i> spp.), northern & southern masked chafers, sugarcane grub ( <i>Tomarus</i> spp.), and Oriental beetle)	6.9 fl oz per 1,000 sq ft (300 fl oz per acre)

(continued)

### APPLICATIONS *(continued)*

SITE	INSECT	APPLICATION RATE
Landscape Ornamentals (including flowers, shrubs, and trees) and Recreational Lawns & Turf	<p>Mix specified dosage of DYLOX 420 SL Turf and Ornamental Insecticide in sufficient water to provide adequate distribution during application to lawn, turf, or groundcover area. To ensure that the active ingredient reaches the soil surface, apply with a minimum of 2 gal of water per 1,000 sq ft.</p> <p>Minimize the amount of thatch present prior to application. After application (on the same day), irrigate with sufficient water to thoroughly wet the remaining thatch and top layers of the soil. If sufficient rainfall to thoroughly wet the thatch and top layers of soil occurs after application and prior to irrigation, further irrigation is not required. Under dry conditions, pre-water prior to application for optimum control of white grubs and weevil larvae.</p> <p>If applied to newly mowed <i>Poa annua</i> irrigate as soon as possible after application, particularly under conditions of high temperature and humidity. Potential injury may be exacerbated by tank mixing with other products, or by the addition of surfactants or other additives.</p> <p>If the turf is being maintained at a mowing height of greater than 1 inch, then the maximum specified application rate (6.9 fl oz per 1,000 sq ft) may be required during periods of high pest pressure.</p> <p>Do not use DYLOX 420 SL Turf and Ornamental Insecticide in hose-proportioned sprayers.</p> <p><b>Note:</b> Do not use treated area or clippings from treated areas for feed or forage. For ornamentals, apply to soil around the plant.</p>	
Narcissus	Narcissus bulb fly	37 fl oz
	Apply specified dosage in <b>100 gallons of water as a drench per 1,000 feet of row</b> . Direct stream to base of plants at beginning of adult fly activity (early May to June). Repeat treatments annually.	

## STORAGE AND DISPOSAL

Do not contaminate water, food, or feed by storage and disposal.

**PESTICIDE STORAGE:** Protect from freezing. Store in a cool, dry place and in such a manner as to prevent cross contamination with other pesticides, fertilizers, food, and feed. Store in original container and out of the reach of children, preferably in a locked storage area.

Handle and open container in a manner as to prevent spillage. If the container is leaking or material spilled for any reason or cause, begin immediate measures to contain the liquid by use of a spill kit or absorbent clay carrier and carefully sweep material into a pile preventing runoff into drains or waterways.

Refer to Precautionary Statements on label for hazards associated with the handling of this material. Do not walk through spilled material. Dispose of pesticide as directed below. In spill or leak incidents, keep unauthorized people away. You may contact the Bayer Environmental Science Emergency Response Team for decontamination procedures or any other assistance that may be necessary. The Bayer Environmental Science Emergency Response Telephone No. is 1-800-334-7577, or contact Chemtrec at 1-800-424-9300.

**PESTICIDE DISPOSAL:** Pesticide wastes are acutely hazardous. Improper disposal of excess pesticide, spray mixture, or rinsate is a violation of Federal law. If these wastes cannot be disposed of by use according to label instructions, contact your State Pesticide or Environmental Control Agency, or the Hazardous Waste representative at the nearest EPA Regional Office for guidance.

**CONTAINER HANDLING:** Nonrefillable container. Do not reuse or refill this container. Triple rinse container (or equivalent) promptly after emptying.

Triple rinse as follows: Empty the remaining contents into application equipment or a mix tank and drain for 10 seconds after the flow begins to drip. Fill the container  $\frac{1}{4}$  full with water and recap. Shake for 10 seconds. Pour rinsate into application equipment or a mix tank or store rinsate for later use or disposal. Drain for 10 seconds after the flow begins to drip. Repeat this procedure two more times.

Do not use container in connection with food, feed, or drinking water. Completely empty container into application equipment. Offer for recycling, if available, or dispose of empty container in a sanitary landfill or by incineration, or, if allowed by State and local authorities, by burning. If burned, stay out of smoke.

## **IMPORTANT: READ BEFORE USE**

Read the entire Directions for Use, Conditions, Disclaimer of Warranties and Limitations of Liability before using this product.

If terms are not acceptable, return the unopened product container at once. By using this product, user or buyer accepts the following Conditions, Disclaimer of Warranties and Limitations of Liability.

**CONDITIONS:** The directions for use of this product are believed to be adequate and must be followed carefully. However, it is impossible to eliminate all risks associated with the use of this product. Ineffectiveness, plant injury or other property damage, or other unintended consequences may result because of factors beyond the control of Bayer CropScience LP such as weather conditions, presence of other materials or the manner of use or application. All such risks shall be assumed by the user or buyer.

**DISCLAIMER OF WARRANTIES:** TO THE EXTENT CONSISTENT WITH APPLICABLE LAW, BAYER CROPSCIENCE LP MAKES NO OTHER WARRANTIES, EXPRESS OR IMPLIED, OF MERCHANTABILITY OR OF FITNESS FOR A PARTICULAR PURPOSE OR OTHERWISE, THAT EXTEND BEYOND THE STATEMENTS MADE ON THIS LABEL. No agent of Bayer CropScience LP is authorized to make any warranties beyond those contained herein or to modify the warranties contained herein. TO THE EXTENT CONSISTENT WITH APPLICABLE LAW, BAYER CROPSCIENCE LP DISCLAIMS ANY liability whatsoever for special, incidental or consequential damages, resulting from the use or handling of this product.

**LIMITATIONS OF LIABILITY:** TO THE EXTENT CONSISTENT WITH APPLICABLE LAW, THE EXCLUSIVE REMEDY OF THE USER OR BUYER FOR ANY AND ALL LOSSES, INJURIES OR DAMAGES RESULTING FROM THE USE OR HANDLING OF THIS PRODUCT, WHETHER IN CONTRACT, WARRANTY, TORT, NEGLIGENCE, STRICT LIABILITY OR OTHERWISE, SHALL NOT EXCEED THE PURCHASE PRICE PAID, OR AT BAYER CROPSCIENCE LP'S ELECTION, THE REPLACEMENT OF PRODUCT.

Dylox is a trademark owned by AMVAC Chemical Corporation and used under license.

Bayer (reg'd) and the Bayer Cross (reg'd) are registered trademarks of Bayer.

Produced for:  
Bayer Environmental Science  
A Division of Bayer CropScience LP  
5000 CentreGreen Way, Suite 400  
Cary, NC 27513  
1-800-331-2867





**Dylox<sup>®</sup>**  
**420 SL**

**TURF AND ORNAMENTAL  
INSECTICIDE**

**ACTIVE INGREDIENT:**

\*Trichlorfon, Dimethyl  
2,2,2-trichloro-1-hydroxy-ethyl)phosphonate ..... 37.3%

**OTHER INGREDIENT:** ..... 62.7%

**TOTAL:** ..... 100.0%

\*3.5 lb trichlorfon per gal of formulated product

EPA Reg. No. 5481-643-432

EPA Est. No. indicated by 3rd and 4th characters of  
the batch number on this package.

(77) = 070989-MO-1

(AX) = 5481-AL-1

**STOP - READ THE LABEL  
BEFORE USE. KEEP OUT OF  
REACH OF CHILDREN.  
CAUTION**

**FIRST AID**

Contains an organophosphate that inhibits cholinesterase.

**If swallowed:** Call a poison control center or doctor immediately for treatment advice. Have person sip a glass of water if able to swallow. Do not induce vomiting unless told to do so by a poison control center or doctor. Do not give anything by mouth to an unconscious person. **If in eyes:** Hold eye open and rinse slowly and gently with water for 15 to 20 minutes. Remove contact lenses, if present, after the first 5 minutes, then continue rinsing eye. Call a poison control center or doctor for treatment advice. **If on skin:** Take off contaminated clothing. Rinse skin immediately with plenty of water for 15 to 20 minutes. Call a poison control center or doctor for treatment advice.

In case of emergency call toll free the Bayer Environmental Science Emergency Response Telephone No. 1-800-334-7577. Have a product container or label with you when calling a poison control center or doctor, or going for treatment. Note to Physician: Prolonged exposure will cause cholinesterase depression. Atropine Sulfate is antidotal. 2-PAM is also antidotal and may be administered in conjunction with atropine.

**PRECAUTIONARY STATEMENTS**

**HAZARDS TO HUMANS AND DOMESTIC ANIMALS**

**CAUTION** Harmful if swallowed or absorbed through skin. Causes moderate eye irritation. Do not take internally. Avoid contact with eyes, skin, or clothing. Do not get in eyes or on clothing. Wash thoroughly with soap and water after handling and before eating, drinking, chewing gum, using tobacco, or using the toilet. Remove and wash contaminated clothing before reuse.

**Net Contents 2.5 Gallons**

86248913

160509AV2

14171a-20140918

**PRODUCED FOR:**

Bayer Environmental Science  
A Division of Bayer CropScience LP  
5000 CentreGreen Way, Suite 400  
Cary, NC 27513  
1-800-331-2867

**Bayer**

**ENVIRONMENTAL**

**HAZARDS**

This pesticide is toxic to fish and wildlife and is extremely toxic to aquatic invertebrates. Apply the product in strict accordance with label directions. For terrestrial uses, do not apply directly to water. Do not contaminate water by cleaning of equipment or disposal of waste.

**STORAGE AND DISPOSAL**

Do not contaminate water, food, or feed by storage and disposal.

**PESTICIDE STORAGE:** Protect from freezing. Store in a cool, dry place and in such a manner as to prevent cross contamination with other pesticides, fertilizers, food, and feed. Store in original container and out of the reach of children, preferably in a locked storage area.

Handle and open container in a manner as to prevent spillage. If the container is leaking or material spilled for any reason or cause, begin immediate measures to contain the liquid by use of a spill kit or absorbent clay carrier and carefully sweep material into a pile preventing runoff into drains or waterways.

Refer to Precautionary Statements on label for hazards associated with the handling of this material. Do not walk through spilled material. Dispose of pesticide as directed below. In spill or leak incidents, keep unauthorized people away. You may contact the Bayer Environmental Science Emergency Response Team for decontamination procedures or any other assistance that may be necessary. The Bayer Environmental Science Emergency Response Telephone No. is 1-800-334-7577, or contact Chemtrec at 1-800-424-9300.

**PESTICIDE DISPOSAL:** Pesticide wastes are acutely hazardous. Improper disposal of excess pesticide, spray mixture, or rinsate is a violation of Federal law. If these wastes cannot be disposed of by use according to label instructions, contact your State Pesticide or Environmental Control Agency, or the Hazardous Waste representative at the nearest EPA Regional Office for guidance.

**CONTAINER HANDLING:** Nonrefillable container. Do not reuse or refill this container. Triple rinse container (or equivalent) promptly after emptying.

Triple rinse as follows: Empty the remaining contents into application equipment or a mix tank and drain for 10 seconds after the flow begins to drip. Fill the container ¾ full with water and recap. Shake for 10 seconds. Pour rinsate into application equipment or a mix tank or store rinsate for later use or disposal. Drain for 10 seconds after the flow begins to drip. Repeat this procedure two more times.

Do not use container in connection with food, feed, or drinking water. Completely empty container into application equipment. Offer for recycling, if available, or dispose of empty container in a sanitary landfill or by incineration, or, if allowed by State and local authorities, by burning. If burned, stay out of smoke.