



Imperium™

For **MEDICAL** and **TRANSPORTATION** Emergencies **ONLY** Call 24 Hours A Day 1-800-334-7577
For **PRODUCT USE** Information Call 1-800-331-2867

INSECTICIDE

FOR WIDE AREA MOSQUITO CONTROL USE ONLY BY FEDERAL, STATE, TRIBAL, OR LOCAL GOVERNMENT OFFICIALS RESPONSIBLE FOR PUBLIC HEALTH OR VECTOR CONTROL, OR BY PERSONS CERTIFIED IN THE APPROPRIATE CATEGORY, OR OTHERWISE AUTHORIZED BY THE STATE OR TRIBAL LEAD PESTICIDE REGULATORY AGENCY TO PERFORM ADULT MOSQUITO CONTROL APPLICATIONS, OR BY PERSONS UNDER THEIR DIRECT SUPERVISION, OR AS ALLOWED BY STATE REGULATIONS FOR PERSONS TREATING PRIVATE PROPERTY.

- Provides Quick Knockdown and Effective Control of Mosquitoes, Gnats, and Non-Biting Midges
- A FFAST™ Formulation
- May be Applied Undiluted or Diluted in Water

ACTIVE INGREDIENT:

Deltamethrin 2.0%

OTHER INGREDIENTS : 98.0%

TOTAL : 100.0%

Contains 0.17 pounds of Deltamethrin per gallon
EPA Reg. No. 432-1534

PRECAUCION AL CONSUMIDOR: Si usted no lee ingles, no use este producto hasta que la etiqueta le haya sido explicada ampliamente.

(TO THE USER: If you cannot read English, do not use this product until the label has been fully explained to you.)

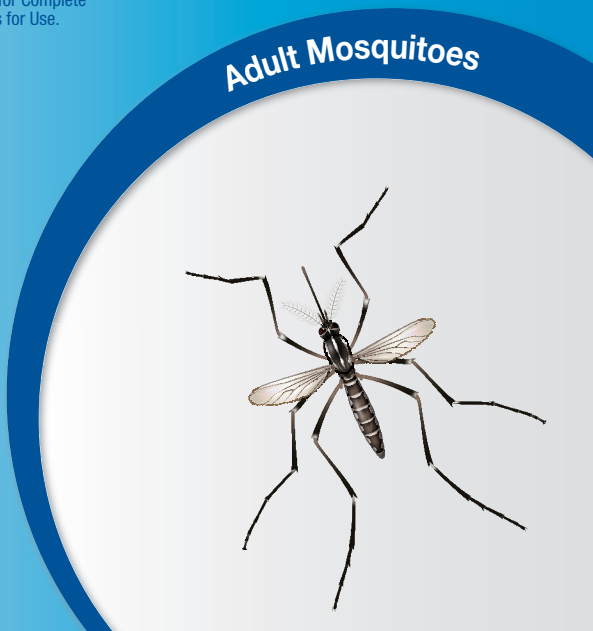
KEEP OUT OF REACH OF CHILDREN CAUTION

See Side Panel for First Aid Instructions and for Complete Precautionary Statements and Directions for Use.



Net Contents
30 Gallons
(113.6 Liters)

SKU# 86204282
86197111A 171115AV2



FIRST AID	
If swallowed	<ul style="list-style-type: none"> • Call a poison control center or doctor for treatment advice. • Have person sip a glass of water if able to swallow. • Do not induce vomiting unless told to do so by a poison control center or doctor. • Do not give anything to an unconscious person.
If in eyes	<ul style="list-style-type: none"> • Hold eye open and rinse slowly and gently with water for 15-20 minutes. • Remove contact lenses, if present, after the first 5 minutes, then continue rinsing. • Call a poison control center or doctor for immediate treatment advice.
Have the product container or label with you when calling a poison control center or doctor or going for treatment.	

PRECAUTIONARY STATEMENTS

HAZARDS TO HUMANS AND DOMESTIC ANIMALS

CAUTION

Harmful if swallowed. Causes moderate eye irritation. Avoid contact with eyes, skin, or clothing. Prolonged or frequently repeated skin contact may cause allergic reactions in some individuals.

Personal Protective Equipment (PPE)

Mixers, loaders, applicators and other handlers must wear:

- Long-sleeved shirt and long pants
- Shoes plus socks

User Safety Requirements

Follow manufacturer's instructions for cleaning / maintaining PPE. If no such instructions for washables exist, use detergent and hot water. Keep and wash PPE separately from other laundry.

Discard clothing and other absorbent materials that have been drenched or heavily contaminated with this product's concentrate. Do not reuse them.

USER SAFETY RECOMMENDATIONS

Users should wash hands before eating, drinking, chewing gum, using tobacco, or using the toilet.

Users should remove clothing/PPE immediately if pesticide gets inside. Then wash thoroughly and put on clean clothing.

ENVIRONMENTAL HAZARDS

This product is extremely toxic to fresh water and estuarine fish and invertebrates. Runoff from treated areas into a body of water may be hazardous to fish and aquatic invertebrates.

Do not apply over bodies of water (lakes, rivers, permanent streams, natural ponds, commercial fish ponds, swamps, marshes, or estuaries), except when necessary to target areas where adult mosquitoes are present, and weather conditions will facilitate movement of applied material away from the water in order to minimize incidental deposition into the water body. Do not contaminate water when disposing of equipment rinsate or wash waters.

When used for mosquito aduictiding;

This pesticide is highly toxic to bees exposed to direct treatment on blooming crops or weeds. Do not apply this product or allow drift when bees are foraging the treatment area, except when applications are made to prevent or control a threat to public and / or animal health determined by a state, tribal, or local health or vector control agency on the basis of documented evidence of disease causing agents in vector mosquitoes, or the occurrence of mosquito-borne disease in animal or human populations, or if specifically approved by the state or tribe during a natural disaster recovery effort.

DIRECTIONS FOR USE

It is a violation of Federal Law to use this product in a manner inconsistent with its labeling.

Before making the first application in a season, it is advisable to consult with the state or tribal agency with primary responsibility for pesticide regulation to determine if other regulatory requirements exist.

SHAKE OR AGITATE THOROUGHLY BEFORE USE: Product (either diluted or undiluted) must be thoroughly agitated before use. Avoid prolonged storage of excess formulation in application equipment.

NOTICE: This concentrate is for dilution with water only; it cannot be diluted in oil.



(continued from front label)

APPLICATION INSTRUCTIONS

Apply this product with aircraft mounted Ultra-Low Volume (ULV) sprayers for wide area applications, to control adult mosquitoes. Do not exceed 0.036 pounds of AI per acre per year to any site. **WIDE AREA AND SPACE SPRAY APPLICATION FOR MOSQUITO CONTROL OVER NON CROP AREAS**

During any three day period do not apply more than 0.00134 lb ai./A. Do not make more than 25 applications per site per year at the high rate of 0.00134 lb ai./A. More frequent applications and more than 25 applications per site may be made to prevent or control a threat to public and/or animal health determined by a state, tribal or local health or vector control agency on the basis of documented evidence of disease causing agents in vector mosquitoes or the occurrence of mosquito-borne disease in animal or human populations, or if specifically approved by the state or tribe during a natural disaster recovery effort.

Imperium™ Insecticide is approved for application as an Ultra-Low Volume (ULV) aerosol to control flying or resting adult mosquitoes (including mosquitoes that may transmit Zika, Dengue, Chikungunya, and West Nile virus) in residential, industrial, urban, recreational, and municipal areas where adult mosquitoes are found. This product is used for control of mosquitoes in areas such as residential areas, industrial areas, urban areas (such as utility tunnels, sewers, storm drains and catch basins, pipe chases, basements, underground passages, parking decks, crawl spaces, or uninhabited buildings), parks, campsites, woodlands, athletic fields, golf courses, playgrounds, recreational and overgrown waste areas, roadsides, swamps*, marshes*, tidal areas*, corrals, feed lots, swine lots, poultry ranges, zoos, animal quarters, barns, dumps, junkyards, tire dumps, and other areas where adult mosquitoes may be found.

*Application to these use sites not allowed in California.

For best results, apply when insects are most active and meteorological conditions are conducive to keeping the spray cloud in the air column close to the ground. An inversion of air temperatures and a light breeze is preferable. Application during the cooler hours of the night or early morning is recommended. Apply when wind speed is equal to or greater than 1 mph.

APPLICATIONS OVER CROPS OR TO AREAS FAVORING DRIFT OVER CROPS

This product may be applied over any and all crops or agricultural areas, (including row, tree, fruit, citrus, pasture, rangeland, and other areas where agricultural enterprises take place) for the control of adult mosquitoes within or adjacent to the treatment areas, or to areas where drift over cropland could occur. Use label rates and follow directions for use as directed in this label. Applications over crops or where drift may occur over crops are limited to 0.0134 lb ai per acre per year, with no more than one application in any three day interval. Maximum number of applications per year depends on the application rate used: 10 applications at 0.00134 lb ai/A, 15 applications at 0.00089 lb ai/A, or 30 applications at 0.00045 lb ai/A. More frequent applications and more than 0.0134 lb ai per acre per year per site may be made to prevent or control a threat to public and/or animal health determined by a state, tribal or local health or vector control agency on the basis of documented evidence of disease causing agents in vector mosquitoes or the occurrence of mosquito-borne disease in animal or human populations, or if specifically approved by the state or tribe during a natural disaster recovery effort.

DROPLET SIZE DETERMINATION FOR AERIAL APPLICATION EQUIPMENT

Spray equipment must be adjusted so that 50% of the spray (the volume mean diameter, Dv 0.5) is less than 60 microns (Dv 0.5 < 60 µm) and that 90% of the spray is contained in droplets smaller than 115 microns (Dv 0.9 < 115 µm). The effects of flight speed and, for non-rotary nozzles, nozzle angle on the droplet size spectrum must be considered. Directions from the equipment manufacturer or vendor, pesticide registrant or a test facility using a wind tunnel and laser-based measurement instrument must be used to adjust equipment to produce acceptable droplet size spectra. Application equipment must be tested at least annually to confirm that pressure at the nozzle and nozzle flow rate(s) are properly calibrated.

RELEASE HEIGHT

Fixed wing:

Apply using a nozzle height of no less than 100 feet above the ground or canopy.

Rotary wing:

Apply using a nozzle height of no less than 50 feet above the ground or canopy.

AERIAL APPLICATION

Imperium Insecticide may be applied either diluted or undiluted at rates of 0.00089 to 0.00134 pounds deltamethrin per acre by fixed wing or rotary aircraft that are capable of making a ULV application. Where dense vegetation is present, the use of higher rates and/or slower speeds is recommended. For best results, treat when insects are most active and meteorological conditions are conducive to keeping the spray cloud in the air column close to the ground. In order to compensate for windy conditions and ensure drift onto the target area aerial application with aircraft equipped with Global Positioning Systems (GPS) and/or onboard navigation/flow rate monitoring is recommended.

STORAGE AND DISPOSAL

Do not contaminate water, food, or feed by storage or disposal.

PESTICIDE STORAGE: Store upright at room temperature. Avoid exposure to extreme temperatures. In case of spill or leakage, soak up with an absorbent material such as sand, sawdust, earth, fuller's earth, etc. Dispose of with chemical waste.

PESTICIDE DISPOSAL: Wastes resulting from the use of this product may be disposed of on site or at an approved waste disposal facility.

CONTAINER HANDLING:

Rigid, Non-refillable containers small enough to shake (i.e., with capacities equal to or less than 5 gallons)

Non-refillable container. Do not reuse or refill this container. Offer for recycling, if available. Triple rinse or pressure rinse container (or equivalent) promptly after emptying. Triple rinse as follows: Empty the remaining contents into application equipment or a mix tank and drain for 10 seconds after the flow begins to drip. Fill the container 1/4 full with water and recap. Shake for 10 seconds. Pour rinsate into application equipment or a mix tank or store rinsate for later use or disposal. Drain for 10 seconds after the flow begins to drip. Repeat this procedure two more times. Then offer for recycling or reconditioning or puncture and dispose of in a sanitary landfill or by incineration, or if allowed by State and Local authorities, by burning. If burned, stay out of smoke. Rigid Non-refillable containers that are too large to shake (i.e., with capacities greater than 5 gallons or 50 pounds)

Non-refillable container. Do not reuse or refill this container. Offer for recycling, if available. Triple rinse or pressure rinse container (or equivalent) promptly after emptying. Triple rinse as follows: Empty the remaining contents into application equipment or a mix tank. Fill the container 1/4 full with water. Replace and tighten closures. Tip container on its side and roll it back and forth, ensuring at least one complete revolution, for 30 seconds. Stand the container on its end and tip it back and forth several times. Empty the rinsate into application equipment or a mix tank or store rinsate for later use or disposal. Repeat this procedure two more times. Then offer for recycling or reconditioning or puncture and dispose of in a sanitary landfill or by incineration, or if allowed by State and Local authorities, by burning. If burned, stay out of smoke.

Refillable container: Refill this container with pesticide only. Do not reuse this container for any other purpose. Cleaning the container before final disposal is the responsibility of the person disposing of the container. Cleaning before refilling is the responsibility of the refiller. To clean the container before final disposal, empty the remaining contents from this container into application equipment or mix tank. Fill the container about 10 percent full with water. Agitate vigorously or recirculate water with the pump for 2 minutes. Pour or pump rinsate into application equipment or rinsate collection system. Repeat this rinsing procedure two more times. Then offer for recycling or reconditioning or puncture and dispose of in a sanitary landfill or incineration, or if allowed by State and Local authorities, by burning. If burned, stay out of smoke.

Bottom Discharge IBC (e.g. - Schuetz Caged IBC or Snyder Square Stackable) Pressure rinsing the container before final disposal is the responsibility of the person disposing of the container. To pressure rinse the container before final disposal, empty the remaining contents from the IBC into application equipment or mix tank. Raise the bottom of the IBC by 1.5 inches on the side which is opposite of the bottom discharge valve to promote more complete product removal. Completely remove the top lid of the IBC. Use water pressurized to at least 40 PSI to rinse all interior portions. Continuously pump or drain rinsate into application equipment or rinsate collection system while pressure rinsing. Continue pressure rinsing for 2 minutes or until rinsate becomes clear. Replace the lid and close bottom valve. Once container is rinsed, offer for recycling if available or puncture and dispose of in a sanitary landfill or by incineration.

IMPORTANT: READ BEFORE USE

Read the entire Directions for Use, Conditions, Disclaimer of Warranties and Limitations of Liability before using this product. If terms are not acceptable, return the unopened product container at once.

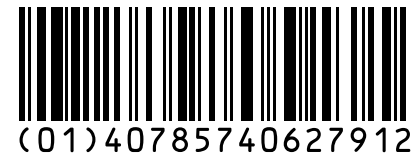
By using this product, user or buyer accepts the following Conditions, Disclaimer of Warranties and Limitations of Liability.

CONDITIONS: The directions for use of this product are believed to be adequate and must be followed carefully. However, it is impossible to eliminate all risks associated with the use of this product. Crop injury, ineffectiveness or other unintended consequences may result because of such factors as weather conditions, presence of other materials, or the manner of use or application, all of which are beyond the control of Bayer CropScience LP. All such risks shall be assumed by the user or buyer.

DISCLAIMER OF WARRANTIES: TO THE EXTENT CONSISTENT WITH APPLICABLE LAW, BAYER CROPSCIENCE LP MAKES NO OTHER WARRANTIES, EXPRESS OR IMPLIED, OF MERCHANTABILITY OR OF FITNESS FOR A PARTICULAR PURPOSE OR OTHERWISE, THAT EXTEND BEYOND THE STATEMENTS MADE ON THIS LABEL. No agent of Bayer CropScience LP is authorized to make any warranties beyond those contained herein or to modify the warranties contained herein. TO THE EXTENT CONSISTENT WITH APPLICABLE LAW, BAYER CROPSCIENCE LP DISCLAIMS ANY LIABILITY WHATSOEVER FOR SPECIAL, INCIDENTAL OR CONSEQUENTIAL DAMAGES RESULTING FROM THE USE OR HANDLING OF THIS PRODUCT.

LIMITATIONS OF LIABILITY: TO THE EXTENT CONSISTENT WITH APPLICABLE LAW, THE EXCLUSIVE REMEDY OF THE USER OR BUYER FOR ANY AND ALL LOSSES, INJURIES OR DAMAGES RESULTING FROM THE USE OR HANDLING OF THIS PRODUCT, WHETHER IN CONTRACT, WARRANTY, TORT, NEGLIGENCE, STRICT LIABILITY OR OTHERWISE, SHALL NOT EXCEED THE PURCHASE PRICE PAID, OR AT BAYER CROPSCIENCE LP'S ELECTION, THE REPLACEMENT OF PRODUCT.

Bayer (reg'd), the Bayer Cross (reg'd), Imperium™ and FFAST™ are trademarks of Bayer.



Produced for:
Bayer Environmental Science
A Division of Bayer CropScience LP
5000 CentreGreen Way, Suite 400
Cary, NC 27513
Product of India

Bayer