

ROACH KILLER BAIT GEL

Maxforce
FC SELECT



Maxforce
FC SELECT

ROACH KILLER BAIT GEL

FOR USE IN COMMERCIAL, INDUSTRIAL AND RESIDENTIAL AREAS

ACTIVE INGREDIENT: Fipronil*: [5-Amino-1-(2, 6-dichloro-4-trifluoromethyl) phenyl)-4-(1, R, S)-(trifluoromethyl) sulfinyl)-1H-pyrazole-3-carbonitrile]: 0.01%
OTHER INGREDIENTS: 99.99%
TOTAL: 100.00%

*CAS NO. 120068-37-3
EPA Reg. No. 432-1259 EPA Est. No. 071106-GA-003

STOP - READ THE LABEL BEFORE USE
KEEP OUT OF REACH OF CHILDREN

CAUTION

Product may stain textiles and clothing.

FIRST AID

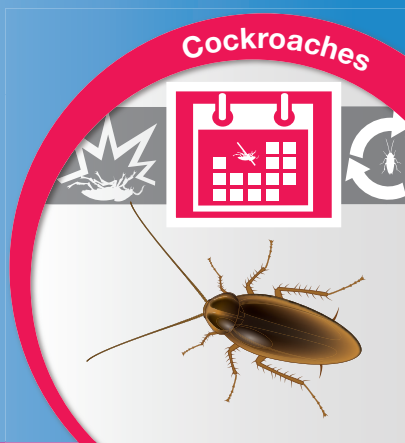
If on skin or clothing:	<ul style="list-style-type: none"> Take off contaminated clothing. Rinse skin immediately with plenty of water for 15 - 20 minutes. Call a poison control center or doctor for treatment advice.
If on eyes:	<ul style="list-style-type: none"> Hold eye open and rinse slowly and gently with water for 15 - 20 minutes. Remove contact lenses, if present, after the first 5 minutes, then continue rinsing. Call a poison control center or doctor for treatment advice.

Have the product container or label with you when calling a poison control center or doctor or going for treatment. You may also contact 1-800-334-7577 for emergency medical treatment information.

Contents: 4 Reservoirs
30g (1.06 Oz) each
Total Net Weight: 120g (4.23 Oz)

See Panel for First Aid Instructions
and for Complete Precautionary
Statements and Directions for Use

79434820
84116661C 200424AV1



Maxforce
FC SELECT

ROACH KILLER BAIT GEL

**For MEDICAL AND TRANSPORTATION
Emergencies ONLY Call 24 Hours A
Day 1-800-334-7577
For PRODUCT USE Information Call
1-800-331-2867**

**PRECAUTIONARY STATEMENTS
HAZARDS TO HUMANS AND
DOMESTIC ANIMALS
CAUTION**

Keep gel away from foods and food contact surfaces. Harmful if absorbed through skin. Causes moderate eye irritation. Avoid contact with skin, eyes, and clothing. Wash thoroughly with soap and water after handling.

PHYSICAL AND CHEMICAL HAZARDS
Do not use this product in or on electrical equipment where a possibility of shock hazard exists.

USE RESTRICTIONS

- Keep gel away from foods and food contact or preparation surfaces.
- Do not apply to areas where food/feed, utensils, or processing surfaces may become contaminated.
- Do not use in areas easily accessible to children, pets, and other non-target organisms.
- In zoos, do not apply in areas accessible to zoo animals.

DIRECTIONS FOR USE

It is a violation of Federal Law to use this product in a manner inconsistent with its labeling.

Use this product for the control of cockroaches in areas where they are a problem: residences and institutional, warehousing and commercial establishments, including food service, food manufacturing and food processing facilities, stores, hospitals, schools, daycare centers, nursing homes, health care facilities, laboratories, computer and electronic equipment facilities, pet shops, zoos (indoor and / or crack and crevice treatment only), basements, buses, boats, trains, aircraft and sub-surface utility systems (steam / electric / gas / data tunnels, drainage systems and sanitary sewers) that are not storm or runoff drainage systems. May be used in both indoor and outdoor (adjacent to structures) environments.

USE DIRECTIONS

Place bait into cracks and crevices or openings leading into voids, or make spot applications near harborages, aggregation, foraging / feeding areas.

Examples of locations for bait placement include: between different elements of construction; the hollow spaces in floors, walls, ceilings, or in equipment legs and bases; cracks and crevices around pipes, doors or windows, refrigerators, stoves, water heaters, dishwashers, and other equipment; behind or under baseboards, cupboards, cabinets, countertops, sinks; and, wherever cockroaches may be found hiding.

Numerous smaller placements will provide faster control than fewer larger spots, especially for German cockroach control. Application rates for all cockroaches: Application rate is dependent on level of infestation and species to be controlled. Apply gel as round spots or thin beads into cracks and crevices or as a spot treatment.

- For use in **maintenance programs** where regular [monthly, quarterly] applications are made for continuous control of cockroach populations, or for light to moderate infestations (or for retreatments), use up to 1.5 grams of bait per square yard.
- To **clean out severe or heavy infestations**, use up to 3.0 grams of bait per square yard.

BAIT QUANTITY REFERENCE TABLE

Approximate weight per spot diameter	Approximate weight per bead length
0.1 gram = Pea size spot	0.25 gram = 1.5 inch bead
1.0 gram = Dime size spot	0.5 gram = 3.0 inch bead
1.5 gram = Quarter size spot	1.0 gram = 6 inch bead

APPLICATIONS IN FOOD/FEED HANDLING ESTABLISHMENTS

Application within food/feed areas of food/feed handling establishments is limited to crack and crevice treatment only. Care should be taken to avoid depositing gel onto exposed surfaces; if gel contacts an exposed surface where food is handled, remove gel and wash exposed surface followed by a potable water rinse.

Food/feed areas include areas for receiving, storage, packing (canning, bottling, wrapping, boxing), preparing, edible waste storage, and enclosed processing systems (mills, dairies, edible oils, syrups). Serving areas are also considered a food/feed area when food is exposed and facility is in operation. **Application of this product in food/feed areas of food/feed handling establishments other than as a crack and crevice treatment is not permitted.**

FOR OUTDOOR USE

(adjacent to home or structure)

Inject bait into cracks and crevices or expansion joints around windows and doors, porches, screens, eaves, sills, patios, garages, under stairways and other areas adjacent to structures where cockroaches may find harborage.

Refillable stations: Refillable stations should be placed every 20 to 30 feet around the perimeter of a structure. Use approximately 2 stations per side of a typical single family home. The quantity of MAXFORCE® FC SELECT ROACH KILLER BAIT GEL bait added to the bait station will vary depending on the severity of infestations, (see the application rate table). Do not exceed 2 - 4 spots per station (3" - 6" bead).

For best results, place stations near air conditioning units, water faucets, foundation vents and weep holes, decks, utility, entryways (e.g. electrical, cable TV), and wherever cockroaches are frequently found.

Regularly inspect all stations and replace bait as needed for continual control.

Position Refillable Bait Stations adjacent to structure in areas where they will not be damaged by lawn equipment such as mowers and trimmers. When placing the station in turf, remove sod layer and place station base plate against the soil. Applicator should not exceed one teaspoon of gel in refillable bait stations.

† American, Oriental, Brown, Smokey Brown

STORAGE AND DISPOSAL

Do not contaminate water, food, or feed by storage or disposal.

PESTICIDE STORAGE: Store in a cool, dry area out of reach of children.

PESTICIDE DISPOSAL: If Partly Filled: Call your local solid waste agency for disposal instructions. Never place unused product down any indoor or outdoor drain.

CONTAINER HANDLING: If Empty: Do not reuse container. Place in trash or offer for recycling if available. If you have questions regarding the use of this product, please call 1-800-331-2867.

CONDITIONS OF SALE AND LIMITATIONS OF WARRANTY AND LIABILITY

Read the entire Directions for Use, Conditions, Disclaimer of Warranties and Limitations of Liability before using this product. If terms are not acceptable, return the unopened product container at once. By using this product, user or buyer accepts the following Conditions, Disclaimer of Warranties and Limitations of Liability.

CONDITIONS: The directions for use of this product are believed to be adequate and must be followed carefully. However, it is impossible to eliminate all risks associated with the use of this product. Ineffectiveness, plant injury, other property damage, as well as other unintended consequences may result because of factors beyond the control of Bayer CropScience LP. Those factors include, but are not limited to, weather conditions, presence of other materials or the manner of use or application. All such risks shall be assumed by the user or buyer.

DISCLAIMER OF WARRANTIES: TO THE EXTENT CONSISTENT WITH APPLICABLE LAW, BAYER CROPSCIENCE LP MAKES NO OTHER WARRANTIES, EXPRESS OR IMPLIED, OF MERCHANTABILITY OR OF FITNESS FOR A PARTICULAR PURPOSE OR OTHERWISE, THAT EXTEND BEYOND THE STATEMENTS MADE ON THIS LABEL. No agent of Bayer CropScience LP is authorized to make any warranties beyond those contained herein or to modify the warranties contained herein. TO THE EXTENT CONSISTENT WITH APPLICABLE LAW, BAYER CROPSCIENCE LP DISCLAIMS ANY LIABILITY WHATSOEVER FOR SPECIAL, INCIDENTAL OR CONSEQUENTIAL DAMAGES, RESULTING FROM THE USE OR HANDLING OF THIS PRODUCT.

LIMITATIONS OF LIABILITY: TO THE EXTENT CONSISTENT WITH APPLICABLE LAW, THE EXCLUSIVE REMEDY OF THE USER OR BUYER FOR ANY AND ALL LOSSES, INJURIES OR DAMAGES RESULTING FROM THE USE OR HANDLING OF THIS PRODUCT, WHETHER IN CONTRACT, WARRANTY, TORT, NEGLIGENCE, STRICT LIABILITY OR OTHERWISE, SHALL NOT EXCEED THE PURCHASE PRICE PAID, OR AT BAYER CROPSCIENCE LP 'S ELECTION, THE REPLACEMENT OF PRODUCT.

Bayer (reg'd), the Bayer Cross (reg'd) and Maxforce® are registered trademarks of Bayer.



(01)00785740139813

Produced for:
Bayer Environmental Science
A Division of Bayer CropScience LP
5000 CentreGreen Way, Suite 400
Cary, NC 27513
Product of China

Bayer



Maxforce[®]

FC SELECT

ROACH KILLER BAIT GEL

Note: Do not remove this label. Use only in areas not easily accessible to children and pets.

ACTIVE INGREDIENT: Fipronil†0.01%
OTHER INGREDIENTS:99.99%
TOTAL:100.00%

†CAS NO. 120068-37-3

EPA Reg. No. 432-1259

EPA Est. No. 071106-GA-003

**KEEP OUT OF REACH OF CHILDREN
AND PETS**
CAUTION

Keep gel away from foods and food contact surfaces.
Harmful if absorbed through skin. Causes moderate
eye irritation. Avoid contact with skin, eyes, and
clothing. Wash thoroughly with soap and water after
handling.

Net Weight: 30g (1.06 Oz)

79434820 80194951D 200424AV1

CONTAINER HANDLING: If empty: Do not reuse
container. Place in trash or offer for recycling if
available. If partly filled: Call your local solid waste
agency or 1-800-CLEANUP for disposal instructions.
Never place unused product down any indoor or outdoor
drain. If you have questions regarding the use of this
product, call toll free 1-800-331-2867.
May stain textiles, fabrics and/or porous surfaces.

SEE OUTER CARTON FOR COMPLETE DIRECTIONS AND
PRECAUTIONS

Produced for:
Bayer Environmental Science
A Division of Bayer CropScience LP
5000 CentreGreen Way, Suite 400
Cary, NC 27513
Product of China

Bayer