

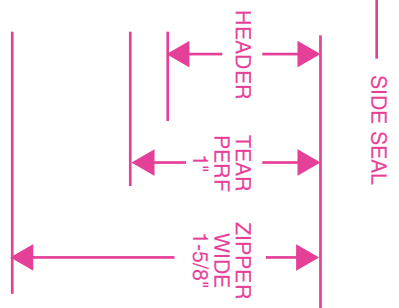
12.5" FRONT PANEL

3" GUSSET

12.5" FRONT PANEL

SIDE SEAL

12"



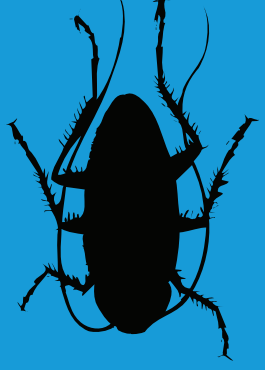
## SINGLES IN A RESEALABLE BAG



# Maxforce®

## ROACH KILLER

### Small Bait Stations



Kills roaches and eggs 24 hours a day,  
7 days a week.  
Breaks the Roach Life Cycle  
This product provides maximum roach  
control.



#### Contents: 72 Child-Resistant Bait Stations

Net Weight:  
**0.05 Oz (1.5 g) per unit**  
Total Net Weight:  
**3.81 Oz (108.0g)**  
**80214723**  
80221436B 110916AV1

#### FOR USE IN COMMERCIAL, INDUSTRIAL AND RESIDENTIAL AREAS

##### Active Ingredients:

Hydramethylnon; tetrahydro-5, 5-dimethyl-2(1H)-pyrimidinone, (3-(4-(trifluoromethyl) phenyl)-1-(2-(4-(trifluoromethyl) phenyl) ethenyl)-2-propenylidene) hydrazine

Other Ingredients: ..... 2.00%

Total ..... 38.00%

EPA Reg. No. 432-1251 EPA Est. No. 071106-GA-003

KEEP OUT OF REACH OF CHILDREN

### CAUTION

#### FIRST AID

IF ON SKIN OR CLOTHING:	<ul style="list-style-type: none"> <li>Take off contaminated clothing.</li> <li>Rinse skin immediately with plenty of water for 15-20 minutes.</li> <li>Call a poison control center or doctor for treatment advice.</li> </ul>
Have the product container or label with you when calling a poison control center or doctor or going for treatment. You may also contact 1-800-334-7577 for emergency medical treatment information.	



Produced for:  
**Bayer Environmental Science**  
A Division of Bayer CropScience LP  
2 T. W. Alexander Drive  
Research Triangle Park, NC 27709



Bayer (reg'd), the Bayer Cross (reg'd) and Maxforce® are registered trademarks of Bayer.

**DISCLAIMER OF WARRANTIES:** TO THE EXTENT CONSISTENT WITH APPLICABLE LAW, BAYER CROPSCIENCE LP MAKES NO OTHER WARRANTIES, EXPRESS OR IMPLIED, OF MERCHANTABILITY OR FITNESS FOR A PARTICULAR PURPOSE OR OTHERWISE. THAT EXTEND BEYOND THE STATEMENTS MADE ON THIS LABEL. No agent or Bayer CropScience LP is authorized to make any warranties beyond those contained herein or to modify the warranties contained herein. TO THE EXTENT CONSISTENT WITH APPLICABLE LAW, BAYER CROPSCIENCE LP DISCLAIMS ANY LIABILITY WHATSOEVER FOR SPECIAL, INCIDENTAL OR CONSEQUENTIAL DAMAGES RESULTING FROM THE USE OR HANDLING OF THIS PRODUCT.

**LIMITATIONS OF LIABILITY:** TO THE EXTENT CONSISTENT WITH APPLICABLE LAW, THE EXCLUSIVE REMEDY OF THE USER OR BUYER FOR ANY AND ALL LOSSES, INJURIES OR DAMAGES, RESULTING FROM THE USE OR HANDLING OF THIS PRODUCT, WHETHER IN CONTRACT, WARRANTY, TORT, NEGLIGENCE, STRICT LIABILITY OR OTHERWISE, SHALL NOT EXCEED THE PURCHASE PRICE PAID, OR AT BAYER CROPSCIENCE LP'S ELECTION, THE REPLACEMENT OF PRODUCT.

By using this product, user or buyer accepts the following Conditions, Disclaimer of Warranties and Limitations of Liability.  
**CONDITIONS:** The directions for use of this product are believed to be adequate and must be followed carefully. However, it is impossible to eliminate all risks associated with the use of this product. Crop injury, ineffectiveness or other unintended consequences may result because of such factors as weather conditions, presence of other materials, or the manner of use or application, all of which are beyond the control of Bayer CropScience LP. All such risks shall be assumed by the user or buyer.

**IMPORTANT: READ BEFORE USE**  
Read the entire Directions for Use, Conditions, Disclaimer of Warranties and Limitations of Liability before using this product. If terms are not acceptable, return the unopened product container at once.

1. and where they hide. Cockroaches infest dark, warm, damp locations.
2. The bait stations can be stuck to a vertical surface by peeling off the bottom label to expose adhesive.
3. For effective roach control use 4-6 bait stations per 100 sq ft of horizontal surface area. Place adjacent to walls and flush in corners.
4. Do not spray the bait stations. Avoid placing the bait stations on freshly sprayed surfaces.
5. Roaches will begin eating the bait immediately and you should expect to see fewer roaches within two weeks.
6. Inspect all bait stations and replace as needed for continual control of roaches.

### Small Bait Stations

# Maxforce®

## ROACH KILLER



TEAR HERE TO OPEN

#### PRECAUTIONARY STATEMENTS

##### HAZARDS TO HUMANS AND DOMESTIC ANIMALS

##### CAUTION

May be harmful if absorbed through skin. Avoid contact with eyes, skin or clothing. Wash hands before drinking, chewing gum, using tobacco or using the toilet.  
Professional Protective Equipment  
Applicators and handlers must wear: Shoes plus socks.  
Follow the manufacturer's instructions for cleaning/maintaining PPE. If no such instructions for washables exist, use detergent and hot water. Keep and wash PPE separately from other laundry.

##### User Safety Recommendations

User should wash hands before eating, drinking, chewing gum, using tobacco, or using the toilet.  
Users should remove clothing/PPE immediately if pesticide gets inside; then wash thoroughly and put on clean clothing.  
Users should remove PPE immediately after handling this product. As soon as possible, wash thoroughly and change into clean clothing.

##### ENVIRONMENTAL HAZARDS

This product is toxic to fish. Do not apply directly to water, or to areas where surface water is present or to intertidal areas below the mean high water mark. Do not contaminate water when cleaning equipment or disposing of equipment washwaters.

##### STORAGE AND DISPOSAL:

Do not contaminate water, food or feed by storage or disposal. Do not remove bait from stations.  
**PESTICIDE STORAGE:** Store in original container away from heat.  
**DISPOSAL:** If empty; Do not reuse this container. Place in trash or offer for recycling if available. If partly filled; Call your local solid waste agency for disposal instructions. Never place unused product down any indoor or outdoor drain.

##### GENERAL INFORMATION

MAXFORCE® Roach Killer Small Bait Stations may be used for the control of small cockroaches, such as German or Brown-Banded roaches, in any area where cockroaches are a problem, such as residential, warehousing, and commercial establishments, including food service, food manufacturing and food processing facilities, hospitals, nursing homes, schools, daycare centers, health care facilities, aircraft, basements, laboratories, computer and electronic equipment facilities, pet shops, zoos, buses, boats and trains. This product has an odorless bait that roaches eat even in the presence of other foods and is packaged in a child-resistant bait station. The transparent environment, darkness, because roaches do not see light in the red spectrum. Do not allow children or pets to play with bait stations.

##### APPLICATION INSTRUCTIONS

It is a violation of Federal law to use this product in a manner inconsistent with its labeling.

1. Place MAXFORCE Roach Killer Small Bait Stations in areas where cockroaches have been seen

**SINGLES IN A RESEALABLE BAG**

Kills roaches and eggs 24 hours a day,  
7 days a week.  
Breaks the Roach Life Cycle  
This product provides maximum roach  
control.



**INSPECTABLE**



**SMALL  
STATIONS**

Contents:

**72 Child-Resistant Bait Stations**

Net Weight:

**0.05 Oz (1.5 g) per unit**

Total Net Weight:

**3.81 Oz (108.0g)**

**80214723**

80221436B 110916AV1



**Maxforce<sup>®</sup>**  
**ROACH KILLER**

**Small Bait Stations**

**FOR USE IN COMMERCIAL, INDUSTRIAL AND RESIDENTIAL AREAS**

**Active Ingredients:**

Hydramethylnon: tetrahydro-5, 5-dimethyl-2(1H)-pyrimidinone, (3-(4-(trifluoromethyl)  
phenyl)-1-(2-(4-(trifluoromethyl) phenyl) ethenyl)-2-propenylidene) hydrazone .....

2.00%

**Other Ingredients:** .....

98.00%

Total

100.00%

EPA Reg. No. 432-1251

EPA Est. No. 071106-GA-003

**KEEP OUT OF REACH OF CHILDREN**

**CAUTION**

**FIRST AID**

**IF ON SKIN  
OR CLOTHING:**

- Take off contaminated clothing.
- Rinse skin immediately with plenty of water for 15-20 minutes.
- Call a poison control center or doctor for treatment advice.

Have the product container or label with you when calling a poison control center or doctor or going for treatment. You may also contact 1-800-334-7577 for emergency medical treatment information.



**Maxforce<sup>®</sup>**

**ROACH KILLER**

**Small Bait Stations**

TEAR HERE TO OPEN 



**Maxforce<sup>®</sup>**  
**ROACH KILLER**

**Small Bait Stations**

## PRECAUTIONARY STATEMENTS

### HAZARDS TO HUMANS AND DOMESTIC ANIMALS

#### CAUTION

May be harmful if absorbed through skin. Avoid contact with eyes, skin or clothing. Wash hands before drinking, chewing gum, using tobacco or using the toilet.

#### Professional Protective Equipment

Applicators and handlers must wear: Shoes plus socks.

Follow the manufacturer's instructions for cleaning/maintaining PPE. If no such instructions for washables exist, use detergent and hot water. Keep and wash PPE separately from other laundry.

#### User Safety Recommendations

User should wash hands before eating, drinking, chewing gum, using tobacco, or using the toilet.

Users should remove clothing/PPE immediately if pesticide gets inside, then wash thoroughly and put on clean clothing.

Users should remove PPE immediately after handling this product. As soon as possible, wash thoroughly and change into clean clothing.

### ENVIRONMENTAL HAZARDS

This product is toxic to fish. Do not apply directly to water, or to areas where surface water is present or to intertidal areas below the mean high water mark. Do not contaminate water when cleaning equipment or disposing of equipment washwaters.

#### STORAGE AND DISPOSAL:

Do not contaminate water, food or feed by storage or disposal. Do not remove bait from stations.

**PESTICIDE STORAGE:** Store in original container away from heat.

**DISPOSAL:** If empty: Do not reuse this container. Place in trash or offer for recycling if available. If partly filled: Call your local solid waste agency for disposal instructions. Never place unused product down any indoor or outdoor drain.

### GENERAL INFORMATION

MAXFORCE<sup>®</sup> Roach Killer Small Bait Stations may be used for the control of small cockroaches, such as German or Brown-Banded roaches, in any area where cockroaches are a problem, such as residential, warehousing and commercial establishments, including food service, food manufacturing and food processing facilities, hospitals, nursing homes, schools, daycare centers, health care facilities, aircraft, basements, laboratories, computer and electronic equipment facilities, pet shops, zoos, buses, boats and trains. This product has an odorless bait that roaches eat even in the presence of other foods and is packaged in a child-resistant bait station. The transparent red top enables you to monitor bait consumption while providing roaches their preferred environment, darkness, because roaches do not see light in the red spectrum. Do not allow children or pets to play with bait stations.

### APPLICATION INSTRUCTIONS

It is a violation of Federal law to use this product in a manner inconsistent with its labeling.

1. Place MAXFORCE Roach Killer Small Bait Stations in areas where cockroaches have been seen

and where they hide. Cockroaches infest dark, warm, damp locations.

2. The bait stations can be stuck to a vertical surface by peeling off the bottom label to expose adhesive.
3. For effective roach control use 4-6 bait stations per 100 sq ft of horizontal surface area. Place adjacent to walls and flush in corners.
4. Do not spray the bait stations. Avoid placing the bait stations on freshly sprayed surfaces.
5. Roaches will begin eating the bait immediately and you should expect to see fewer roaches within two weeks.
6. Inspect all bait stations and replace as needed for continual control of roaches.

### IMPORTANT: READ BEFORE USE

Read the entire Directions for Use, Conditions, Disclaimer of Warranties and Limitations of Liability before using this product. If terms are not acceptable, return the unopened product container at once.

By using this product, user or buyer accepts the following Conditions, Disclaimer of Warranties and Limitations of Liability.

**CONDITIONS:** The directions for use of this product are believed to be adequate and must be followed carefully. However, it is impossible to eliminate all risks associated with the use of this product. Crop injury, ineffectiveness or other unintended consequences may result because of such factors as weather conditions, presence of other materials, or the manner of use or application, all of which are beyond the control of Bayer CropScience LP. All such risks shall be assumed by the user or buyer.

**DISCLAIMER OF WARRANTIES:** TO THE EXTENT CONSISTENT WITH APPLICABLE LAW, BAYER CROPSCIENCE LP MAKES NO OTHER WARRANTIES, EXPRESS OR IMPLIED, OF MERCHANTABILITY OR OF FITNESS FOR A PARTICULAR PURPOSE OR OTHERWISE, THAT EXTEND BEYOND THE STATEMENTS MADE ON THIS LABEL. No agent of Bayer CropScience LP is authorized to make any warranties beyond those contained herein or to modify the warranties contained herein. TO THE EXTENT CONSISTENT WITH APPLICABLE LAW, BAYER CROPSCIENCE LP DISCLAIMS ANY LIABILITY WHATSOEVER FOR SPECIAL, INCIDENTAL OR CONSEQUENTIAL DAMAGES RESULTING FROM THE USE OR HANDLING OF THIS PRODUCT.

**LIMITATIONS OF LIABILITY:** TO THE EXTENT CONSISTENT WITH APPLICABLE LAW, THE EXCLUSIVE REMEDY OF THE USER OR BUYER FOR ANY AND ALL LOSSES, INJURIES OR DAMAGES RESULTING FROM THE USE OR HANDLING OF THIS PRODUCT, WHETHER IN CONTRACT, WARRANTY, TORT, NEGLIGENCE, STRICT LIABILITY OR OTHERWISE, SHALL NOT EXCEED THE PURCHASE PRICE PAID, OR AT BAYER CROPSCIENCE LP'S ELECTION, THE REPLACEMENT OF PRODUCT.

Bayer (reg'd), the Bayer Cross (reg'd) and Maxforce<sup>®</sup> are registered trademarks of Bayer.



Produced for:

**Bayer Environmental Science**

A Division of Bayer CropScience LP  
2 T. W. Alexander Drive  
Research Triangle Park, NC 27709

