



Permanone[®]

31-66

FOR USE ONLY BY FEDERAL, STATE, TRIBAL OR LOCAL GOVERNMENT OFFICIALS RESPONSIBLE FOR PUBLIC HEALTH OR VECTOR CONTROL, OR BY PERSONS CERTIFIED IN THE APPROPRIATE CATEGORY OR OTHERWISE AUTHORIZED BY THE STATE OR TRIBAL LEAD PESTICIDE REGULATORY AGENCY TO PERFORM ADULT MOSQUITO CONTROL APPLICATIONS, OR BY PERSONS UNDER THEIR DIRECT SUPERVISION.

* A SYNERGIZED PERMANONE FORMULATION FOR QUICK KNOCKDOWN AND EFFECTIVE CONTROL OF ADULT MOSQUITOES, GNATS, BITING AND NON-BITING MIDGES, BLACKFLIES AND OTHER BITING FLIES

ACTIVE INGREDIENTS:

Permethrin:..... 31.28%
 **Piperonyl Butoxide 66.00%
 OTHER INGREDIENTS:..... 2.72%

TOTAL: 100.00%

** (butylcarbityl)(6-propylpiperonyl) ether and related compounds

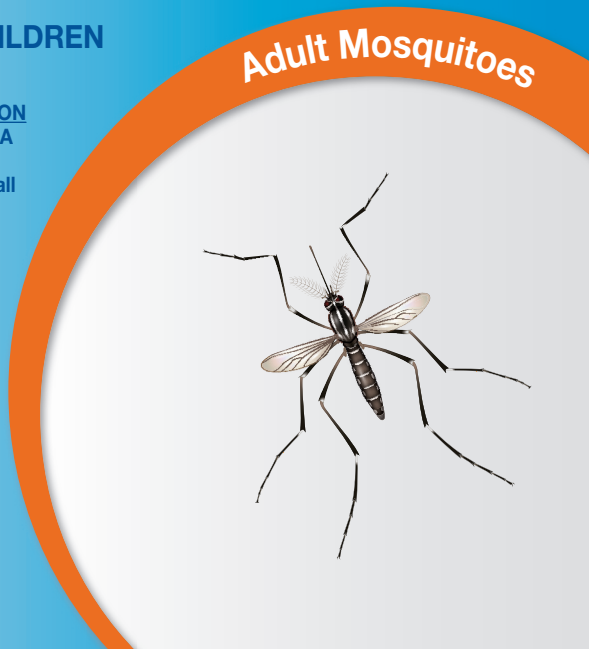
EPA REG. NO. 432-1250

KEEP OUT OF REACH OF CHILDREN
CAUTION

For **MEDICAL and TRANSPORTATION**
 Emergencies **ONLY** Call 24 Hours A
 Day 1-800-334-7577
 For **PRODUCT USE** Information Call
 1-800-331-2867

Net Contents
275 Gallons
04288415

84502324A 141014AV1



FIRST AID	
If swallowed:	<ul style="list-style-type: none"> • Call a poison control center or doctor immediately for treatment advice. • Have person sip a glass of water if able to swallow. • Do not induce vomiting unless told to do so by a poison control center or doctor. • Do not give anything by mouth to an unconscious person.
If on skin or clothing:	<ul style="list-style-type: none"> • Take off contaminated clothing. • Rinse skin immediately with plenty of water for 15 - 20 minutes. • Call a poison control center or doctor for treatment advice.
If inhaled:	<ul style="list-style-type: none"> • Move person to fresh air. • If person is not breathing, call 911 or an ambulance, then give artificial respiration, preferably mouth-to-mouth if possible. • Call a poison control center or doctor for further treatment advice.
If in eyes:	<ul style="list-style-type: none"> • Hold eye open and rinse slowly and gently with water for 15 - 20 minutes. • Remove contact lenses, if present, after the first 5 minutes, then continue rinsing eye. • Call a poison control center or doctor for treatment advice.
[Synthetic Pyrethroid]	
Have the product container or label with you when calling a poison control center or doctor, or going for treatment. In case of Medical emergencies or health and safety inquiries or in case of fire, leaking or damaged containers, information may be obtained by calling 1-800-334-7577.	

PRECAUTIONARY STATEMENTS
HAZARDS TO HUMANS AND DOMESTIC ANIMALS
CAUTION

Harmful if swallowed, absorbed through skin or inhaled. Prolonged or frequently repeated skin contact may cause allergic reactions in some individuals. Avoid contact with skin, eyes, or clothing. Avoid breathing vapors. Wash thoroughly with soap and water after handling. Remove contaminated clothing and wash before reuse.

PERSONAL PROTECTIVE EQUIPMENT (PPE)

Some materials that are chemical-resistant to this product are made of barrier laminate, nitrile rubber greater or equal to 14 mils or neoprene rubber greater or equal to 14 mils. If you want more options, follow the instructions for category E on an EPA chemical-resistance category selection chart.

Mixers, loaders, applicators and other handlers must wear:

- Long-sleeved shirt and long pants,
- Shoes plus socks,
- Chemical-resistant gloves for all handlers except for applicators using motorized ground equipment, pilots, and flaggers
- Chemical-resistant apron for mixers/loaders, persons cleaning equipment, and persons exposed to the concentrate.

Follow manufacturer's instructions for cleaning/maintaining PPE. If no such instructions for washables exist, use detergent and hot water. Keep and wash PPE separately from other laundry.

Discard clothing and other absorbent materials that have been drenched or heavily contaminated with this product's concentrate. Do not reuse them.

See engineering controls for additional requirements.

USER SAFETY RECOMMENDATIONS
Users should wash hands before eating, drinking, chewing gum, using tobacco or using the toilet. Users should remove clothing/PPE immediately if pesticide gets inside. Then wash thoroughly and put on clean clothing. Users should remove PPE immediately after handling this product. Wash the outside of gloves before removing. As soon as possible, wash thoroughly and change into clean clothing.

ENGINEERING CONTROLS

Pilots must use an enclosed cockpit that meet the requirements listed in the Worker Protection Standard (WPS) for agricultural pesticides [40 CFR 170.24(d)(6)].

Human flagging is prohibited. Flagging to support aerial application is limited to use of the Global Positioning System (GPS) or mechanical flaggers.

ENVIRONMENTAL HAZARDS

This pesticide is extremely toxic to aquatic organisms, including fish and invertebrates. Runoff from treated areas or deposition of spray droplets into a body of water may be hazardous to fish and aquatic invertebrates.

Before making the first application in a season, it is advisable to consult with the state or tribal agency with primary responsibility for pesticide regulation to determine if other regulatory requirements exist.

Do not apply over bodies of water (lakes, rivers, permanent streams, natural ponds, commercial fish ponds, swamps, marshes or estuaries), except when necessary to target areas where adult mosquitoes are present, and weather conditions will facilitate movement of applied material away from the water in order to minimize incidental deposition into the water body. Do not contaminate water when disposing of equipment rinsate or wash waters.

This pesticide is highly toxic to bees exposed to direct treatment on blooming crops or weeds. Do not apply this product or allow drift when bees are actively visiting the treatment area, except when applications are made to prevent or control a threat to public and/or animal health determined by a state, tribal or local health or vector control agency on the basis of documented evidence of disease causing agents in vector mosquitoes, or the occurrence of mosquito-borne disease in animal or human populations, or if specifically approved by the state or tribe during a natural disaster recovery effort. Applications should be timed to provide the maximum possible interval between treatment and the next period of bee activity.





Permanone®

31-66

DIRECTIONS FOR USE

It is a violation of Federal law to use this product in a manner inconsistent with its labeling.

READ THE ENTIRE LABEL FOR DIRECTIONS.

Not for use in outdoor residential misting systems.

Do not allow spray treatment to drift on cropland, (other than crops listed) or potable water supplies.

In treatment of corrals, feed lots, swine lots, and zoos, cover any exposed drinking water, drinking water fountains and animal feed before application.

Not for use in metered release systems.

FOR USE ONLY BY FEDERAL, STATE, TRIBAL OR LOCAL GOVERNMENT OFFICIALS RESPONSIBLE FOR PUBLIC HEALTH OR VECTOR CONTROL, OR BY PERSONS CERTIFIED IN THE APPROPRIATE CATEGORY OR OTHERWISE AUTHORIZED BY THE STATE OR TRIBAL LEAD PESTICIDE REGULATORY AGENCY TO PERFORM ADULT MOSQUITO CONTROL APPLICATIONS, OR BY PERSONS UNDER THEIR DIRECT SUPERVISION.

INSECTS CONTROLLED

Adult mosquitoes, gnats, biting and non-biting midges, black flies, stable flies, horse flies, deer flies and other biting flies.

WHERE TO USE

Areas that may be treated for insect control include, but are not limited to; parks, campsites, woodlands, athletic fields, golf courses, residential areas, and municipalities, gardens, playgrounds, recreational areas, overgrown waste areas and other areas where the labeled pests are a problem.

USE DIRECTIONS

This product is a synergized concentrate of permethrin containing 2.86 pounds per gallon permethrin. It may be applied undiluted or may be diluted with mineral oils (such as Orchem or Klearol), cottonseed oil or other suitable non-phytotoxic ULV-suitable oil. This product is specifically designed to be applied as a ULV spray. Treat when mosquitoes are most active and weather conditions are conducive to keeping the fog in the air column close to the ground, e.g. cool temperatures and wind speeds are equal to or greater than 1 mph. Application during the cool hours of night or early morning is usually preferable. All types of applications should be conducted at temperatures above 50°F.

APPLICATION INSTRUCTIONS

Apply at a rate not to exceed 0.007 pounds of permethrin per acre in any given 24 hour period. Do not retreat a site more than once in 3 days. Do not exceed 25 applications at 0.007 pounds of permethrin per acre (not to exceed a total of 0.18 pounds of permethrin per acre) in any given season. More frequent applications may be made to prevent or control a threat to public and/or animal health determined by a state, tribal or local health or vector control agency on the basis of documented evidence of disease causing agents in vector mosquitoes or the occurrence of mosquito-borne disease in animal or human populations, or if specifically approved by the state or tribe during a natural disaster recovery effort.

This product can be applied to the air column over specific growing crops prior to harvest and range grasses for the control of adult mosquitoes and biting flies within or adjacent to these areas. Application can be made where the following crops are present:

Alfalfa, Almonds, Apples, Artichoke, Asparagus, Avocado, Broccoli, Brussel Sprouts, Cabbage, Cantaloupe, Cauliflower, Celery, Cherry, Corn (field and pop), Corn (sweet), Eggplant, Filberts (Hazelnuts), Garlic, Horseradish, Lettuce, Onions (dry bulb only), Papayas (FL only), Peaches / Nectarines, Pears, Bell Peppers, Pistachios, Potatoes, Soybeans, Spinach, Tomatoes, and Walnuts. Cucurbit Vegetables, including Chayote (fruit), Chinese Waxgourd (Chinese preserving melon), Citron Melon, Cuban Pumpkin, Cucumber, Gherkin, Gourd (edible, includes hyotan, cucuzza, hechima, Chinese okra), Momordica spp. (includes balsam apple, balsam pear, bitter melon, Chinese cucumber), Muskmelon (hybrids and/or cultivars of Cucumis melo including true cantaloupe, cantaloupe, casaba, Crenshaw melon, golden pershaw melon, honeydew melon, honey balls, mango melon, Persian melon, pineapple melon, Santa Claus melon, snake melon and Winter melon), Pumpkin, Squash (includes summer squash types such as: butternut squash, calabaza, crookneck squash, Hubbard Squash, Scallop Squash, Straightneck Squash, Vegetable Marrow and Zucchini, and Winter Squash types such as acorn squash and spaghetti squash), Watermelon (includes hybrids and/or varieties of Citrullus lanatus)

Leafy Vegetables, including Leafy Vegetables (except brassica) (Amaranth (leafy amaranth, Chinese Spinach, tampala), Arugula (Rockette), Chervil, Chrysanthemum (edible leaved and garland), Corn Salad, Cress (garden), Cress (upland, yellow rocket, winter cress), Dandelion, Dock (sorrel), Endive (escarole), Lettuce (head and leaf), Orach, Parsley, Purslane (garden and winter), Radicchio (red chicory), Spinach (including New Zealand and Vine (Malabar spinach, Indian spinach))

SPRAY DROPLET SIZE DETERMINATION

Apply when wind speed is greater than 1 mph.

GROUND EQUIPMENT:

Spray equipment must be adjusted so that the volume median diameter is less than 30 microns ($D_v 0.5 < 30 \mu m$) and that 90% of the spray is contained in droplets smaller than 50 microns ($D_v 0.9 < 50 \mu m$). Directions from the equipment manufacturer or vendor, pesticide registrant or a test facility using a laser-based measurement instrument must be used to adjust equipment to produce acceptable droplet size spectra. Application equipment must be tested at least annually to confirm that pressure at the nozzle and nozzle flow rate(s) are properly calibrated.

AERIAL APPLICATION MADE AT ≤ 200 FEET ABOVE GROUND ELEVATION:

Spray equipment must be adjusted so that the volume median diameter produced is less than 60 microns ($D_v 0.5 < 60 \mu m$) and that 90% of the spray is contained in droplets smaller than 100 microns ($D_v 0.9 < 100 \mu m$). The effects of flight speed and, for non-rotary nozzles, nozzle angle on the droplet size spectrum must be considered. Directions from the equipment manufacturer or vendor, pesticide registrant or a test facility using a wind tunnel and laser-based measurement instrument must be used to adjust equipment to produce acceptable droplet size spectra. Application equipment must be tested at least annually to confirm that pressure at the nozzle and nozzle flow rate(s) are properly calibrated.

AERIAL APPLICATION MADE AT >200 FEET ABOVE GROUND ELEVATION:

Spray equipment must be adjusted so that the volume median diameter produced is less than 70 microns ($D_v 0.5 < 70 \mu m$) and that 90% of the spray is contained in droplets smaller than 145 microns ($D_v 0.9 < 145 \mu m$). The effects of flight speed and, for non-rotary nozzles, nozzle angle on the droplet size spectrum must be considered. Directions from the equipment manufacturer or vendor, pesticide registrant or a test facility using a wind tunnel and laser-based measurement instrument must be used to adjust equipment to produce acceptable droplet size spectra. Application equipment must be tested at least annually to confirm that pressure at the nozzle and nozzle flow rate(s) are properly calibrated.

GROUND APPLICATION

Vehicle-Mounted ULV Cold Aerosol Generators or Vehicle-Mounted Non-Thermal Aerosol (Cold Fog): Apply through non-thermal ULV application equipment and base acreage calculations on the equipment manufacturer's recommended swath width. Apply at a rate not to exceed 0.007 pounds of permethrin per acre in a given 24 hour period. An optimum swath is created when PERMANONE® 31-66 is applied from a truck that is being driven perpendicular to the wind direction. Direct the spray head of equipment to ensure even distribution of the spray cloud throughout the area. For best results, apply when insects are most active and meteorological conditions are conducive to keeping the spray cloud close to the ground. An inversion of air temperatures and a light breeze is preferable. Apply when ground wind speed is equal to or greater than 1 mph. PERMANONE 31-66 may be applied through ULV Cold Aerosol Generators, or other equipment designed for non-thermal ULV aerosol applications. The desired application rate may be obtained under different conditions by altering the dilution rate of PERMANONE 31-66, the flow rate of the insecticide from the application equipment and the vehicle speed. Examples are given in the following Dilution Table.

DILUTION TABLE				
SPACE SPRAY				
Application Rate	Equipment Speed (mph)	Flow Rate (fl oz/min)		
		Undiluted	*Diluted 1:2	*Diluted 1:4
0.0035 lb ai/acre permethrin	5	0.5	1.5	2.5
	10	1.0	3.0	5.0
	15	1.5	4.5	7.5
	20	2.0	6.0	10.0
0.007 lb ai/acre permethrin	5	1.0	3.0	5.0
	10	2.0	6.0	10.0
	15	3.0	9.0	15.0
	20	4.0	12.0	-

*Dilution instructions specify volume ratios of product: diluent (ie. 1:2 equals 1 volume part Permanone 31-66 mixed with 2 volume parts diluent).

Best results are expected by application when weather conditions favor an inversion of temperatures in the area treated. Apply when ground wind speed is equal to or greater than 1 mph. Apply using vehicle mounted non thermal ULV equipment to create an insecticidal swath. Early morning and evening are the best times for application.

Temperature fluctuations may require periodical adjustment of equipment to deliver the desired flow rate at the specified speed of travel. This flow rate must be maintained to insure the distribution of the proper amount of active ingredient per acre.

AERIAL APPLICATION

PERMANONE 31-66 may be applied either diluted or undiluted at rates of 0.0035 to 0.007 pounds permethrin per acre by fixed wing or rotary aircraft that are capable of making a ULV application. Do not apply by fixed wing aircraft at a height less than 100 feet, or by helicopter at a height less than 75 feet. For best results, treat when insects are most active and meteorological conditions are conducive to keeping the spray cloud in the air column close to the ground. In order to compensate for windy conditions and ensure drift onto the target area aerial application with aircraft equipped with Global Positioning Systems (GPS) is recommended.

IN FLORIDA: Do not apply by aircraft unless approved by the Florida Department of Agriculture & Consumer Services.

STORAGE AND DISPOSAL

Do not contaminate water, food, or feed by storage or disposal.

PESTICIDE STORAGE AND SPILL PROCEDURES: Store upright at room temperature. Avoid exposure to extreme temperatures. In case of spill or leakage, soak up with an absorbent material such as sand, sawdust, earth, fuller's earth, etc. Dispose of with chemical waste.

PESTICIDE DISPOSAL: Wastes resulting from the use of this product may be disposed of on site or at an approved waste disposal facility.

CONTAINER HANDLING:

Rigid, Non-refillable containers small enough to shake (i.e., with capacities equal to or less than 5 gallons)

Non-refillable container. Do not reuse or refill this container. Offer for recycling, if available. Triple rinse or pressure rinse container (or equivalent) promptly after emptying. Triple rinse as follows: Empty the remaining contents into application equipment or a mix tank and drain for 10 seconds after the flow begins to drip. Fill the container 1/4 full with mineral oil and recap. Shake for 10 seconds. Pour rinsate into application equipment or a mix tank or store rinsate for later use or disposal. Drain for 10 seconds after the flow begins to drip. Repeat this procedure two more times. Then offer for recycling or reconditioning or puncture and dispose of in a sanitary landfill or incineration, or if allowed by State and Local authorities, by burning. If burned, stay out of smoke.

Rigid Non-refillable containers that are too large to shake (i.e., with capacities greater than 5 gallons or 50 lbs)

Non-refillable container. Do not reuse or refill this container. Offer for recycling, if available. Triple rinse or pressure rinse container (or equivalent) promptly after emptying. Triple rinse as follows: Empty the remaining contents into application equipment or a mix tank. Fill the container 1/4 full with mineral oil. Replace and tighten closures. Tip container on its side and roll it back and forth, ensuring at least one complete revolution, for 30 seconds. Stand the container on its end and tip it back and forth several times. Empty the rinsate into application equipment or a mix tank or store rinsate for later use or disposal. Repeat this procedure two more times. Then offer for recycling or reconditioning or puncture and dispose of in a sanitary landfill or incineration, or if allowed by State and Local authorities, by burning. If burned, stay out of smoke.

Refillable container. Refill this container with pesticide only. Do not reuse this container for any other purpose. Cleaning the container before final disposal is the responsibility of the person disposing of the container. Cleaning before refilling is the responsibility of the refiller. To clean the container before final disposal, empty the remaining contents from this container into application equipment or mix tank. Fill the container about 10 percent full with mineral oil Agitate vigorously or recirculate mineral oil with the pump for 2 minutes. Pour or pump rinsate into application equipment or rinsate collection system. Repeat this rinsing procedure two more times. Then offer for recycling or reconditioning or puncture and dispose of in a sanitary landfill or incineration, or if allowed by State and Local authorities, by burning. If burned, stay out of smoke.

IMPORTANT: READ BEFORE USE

Read the entire Directions for Use, Conditions, Disclaimer of Warranties and Limitations of Liability before using this product. If terms are not acceptable, return the unopened product container at once.

By using this product, user or buyer accepts the following Conditions, Disclaimer of Warranties and Limitations of Liability.

CONDITIONS: The directions for use of this product are believed to be adequate and must be followed carefully. However, it is impossible to eliminate all risks associated with the use of this product. Crop injury, ineffectiveness or other unintended consequences may result because of such factors as weather conditions, presence of other materials, or the manner of use or application, all of which are beyond the control of Bayer CropScience LP. All such risks shall be assumed by the user or buyer.

DISCLAIMER OF WARRANTIES: TO THE EXTENT CONSISTENT WITH APPLICABLE LAW, BAYER CROPSCIENCE LP MAKES NO OTHER WARRANTIES, EXPRESS OR IMPLIED, OF MERCHANTABILITY OR OF FITNESS FOR A PARTICULAR PURPOSE OR OTHERWISE, THAT EXTEND BEYOND THE STATEMENTS MADE ON THIS LABEL. No agent of Bayer CropScience LP is authorized to make any warranties beyond those contained herein or to modify the warranties contained herein. TO THE EXTENT CONSISTENT WITH APPLICABLE LAW, BAYER CROPSCIENCE LP DISCLAIMS ANY LIABILITY WHATSOEVER FOR SPECIAL, INCIDENTAL OR CONSEQUENTIAL DAMAGES RESULTING FROM THE USE OR HANDLING OF THIS PRODUCT.

LIMITATIONS OF LIABILITY: TO THE EXTENT CONSISTENT WITH APPLICABLE LAW, THE EXCLUSIVE REMEDY OF THE USER OR BUYER FOR ANY AND ALL LOSSES, INJURIES OR DAMAGES RESULTING FROM THE USE OR HANDLING OF THIS PRODUCT, WHETHER IN CONTRACT, WARRANTY, TORT, NEGLIGENCE, STRICT LIABILITY OR OTHERWISE, SHALL NOT EXCEED THE PURCHASE PRICE PAID, OR AT BAYER CROPSCIENCE LP'S ELECTION, THE REPLACEMENT OF PRODUCT.

Bayer (reg'd), the Bayer Cross (reg'd), Permanone® and Backed by Bayer™ are trademarks of Bayer.

**BACKED
by BAYER.**

Bayer

Produced for:
Bayer Environmental Science
A Division of Bayer CropScience LP
2 T. W. Alexander Drive
Research Triangle Park, NC 27709

4492179E 141014AV1