

TetraSan[®]

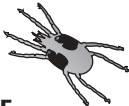
5 W D G



MITICIDE / OVICIDE



**Affects All Life Stages
of Spider Mites**



Active Ingredient	By Wt
Etoxazole*	5%
Other Ingredients	95%
Total	100%

*(*RS*)-5-*tert*-butyl-2-[2-(2,6-difluorophenyl)-4,5-dihydrooxazol-4-yl]phenetole

TetraSan[®] 5 WDG is a water dispersible granule containing 5% active ingredient per pound.

EPA Reg. No. 59639-108
EPA Est. 67545-AZ-1

**KEEP OUT OF
REACH OF CHILDREN
CAUTION**

**SEE NEXT PAGE FOR ADDITIONAL
PRECAUTIONARY STATEMENTS**

Form 1453-H

**NET WEIGHT 1 POUND
(8-2 OUNCE PACKETS)**

FIRST AID

- If swallowed:** Call a poison control center or doctor immediately for treatment advice.
Have person sip a glass of water if able to swallow.
Do not induce vomiting unless told to do so by the poison control center or doctor.
Do not give anything by mouth to an unconscious person.
- If in eyes:** Hold eye open and rinse slowly and gently with water for 15-20 minutes.
Remove contact lenses, if present, after the first 5 minutes, then continue rinsing eye.
Call a poison control center or doctor for further treatment advice.
- If on skin or clothing:** Take off contaminated clothing.
Rinse skin immediately with plenty of water for 15-20 minutes.
Call a poison control center or doctor for treatment advice.
- If inhaled:** Move person to fresh air.
If person is not breathing, call 911 or an ambulance, then give artificial respiration, preferably by mouth-to-mouth, if possible.
Call a poison control center or doctor for further treatment advice.

HOTLINE NUMBER

Have the product container or label with you when calling a poison control center or doctor, or going for treatment. You may also contact 1-800-892-0099 for emergency medical treatment information.

PRECAUTIONARY STATEMENTS

HAZARDS TO HUMANS & DOMESTIC ANIMALS

CAUTION

Harmful if swallowed. Causes moderate eye irritation. Avoid contact with eyes, skin or clothing. Avoid breathing dust or spray mist.

PERSONAL PROTECTIVE EQUIPMENT (PPE):

Applicators and other handlers must wear: long-sleeved shirt and long pants, socks plus shoes.

Mixers/loaders must also wear: a minimum of a NIOSH-approved particulate filtering facepiece respirator with any N, R or P filter; OR a NIOSH-approved elastomeric particulate respirator with any N, R, or P filter; OR a NIOSH-approved powered air-purifying respirator with a HE filter.

Follow manufacturer's instructions for cleaning and maintaining PPE. If no such instructions for washables exist, use detergent and hot water. Keep and wash PPE separately from other laundry.

ENGINEERING CONTROLS STATEMENT

Water soluble packets, when used correctly, qualify as a closed mixing/loading system under the Worker Protection Standard [40 CFR 170.607(d)]. Mixers and loaders handling this product while it is enclosed in intact water soluble packets may elect to wear reduced PPE of long-sleeved shirt, long pants, shoes, socks, a chemical-resistant apron, and chemical-resistant gloves. When reduced PPE is worn because a closed system is being used, handlers must be provided all PPE specified above for "applicators and other handlers" and have such PPE immediately available for use in emergency, such as a spill or equipment break-down.

USER SAFETY RECOMMENDATIONS

Users should:

- Wash hands before eating, drinking, chewing gum, using tobacco or using the toilet.
- Remove clothing immediately if pesticide gets inside. Then wash thoroughly and put on clean clothing.
- Remove PPE immediately after handling this product. As soon as possible, wash thoroughly and change into clean clothing.

ENVIRONMENTAL HAZARDS

This pesticide is toxic to freshwater and marine/estuarine aquatic invertebrates, including oysters and shrimp. Do not apply directly to water, or to areas where surface water is present or to intertidal areas below the mean high water mark. Do not apply when weather conditions favor drift from treated areas. Drift and runoff from treated areas may be hazardous to aquatic organisms in water adjacent to treated areas. Do not contaminate water when disposing of equipment washwaters or rinsate.

DIRECTIONS FOR USE

It is a violation of Federal law to use this product in a manner inconsistent with its labeling.

READ ENTIRE LABEL. USE STRICTLY IN ACCORDANCE WITH PRECAUTIONARY STATEMENTS AND DIRECTIONS, AND WITH APPLICABLE STATE AND FEDERAL REGULATIONS.

Do not apply this product in a way that will contact workers or other persons, either directly or through drift. Only protected handlers may be in the area during application. For any requirements specific to your State or Tribe, consult the agency responsible for pesticide regulation.

AGRICULTURAL USE REQUIREMENTS

Use this product only in accordance with its labeling and with the Worker Protection Standard, 40 CFR part 170. This standard contains requirements for the protection of agricultural workers on farms, forests, nurseries, and greenhouses, and handlers of agricultural pesticides. It contains requirements for training, decontamination, notification, and emergency assistance. It also contains specific instructions and exceptions pertaining to the statements on this label about personal protective equipment and restricted-entry interval.

Do not enter or allow workers entry into treated areas during the restricted-entry interval (REI) of 12 hours.

PPE required for early entry to treated areas that is permitted under the Worker Protection Standard and that involves contact with anything that has been treated, such as plants, soil, or water, is: long-sleeved shirt and long pants, socks plus shoes.

NON-AGRICULTURAL USE REQUIREMENTS

The requirements in this box apply to uses of this product that are NOT within the scope of the Worker Protection Standards for agricultural pesticides (40 CFR Part 170). The WPS applies when this product is used to produce agricultural plants on farms, forests, nurseries, or greenhouses.

Keep all unprotected persons out of operating areas, or vicinity where there may be drift. Do not enter treated areas without protective clothing until sprays have dried.

**DISCLAIMER, RISKS OF USING THIS PRODUCT,
LIMITED WARRANTY AND LIMITATION OF LIABILITY**

IMPORTANT: Read the entire Label including this Disclaimer, Risks of Using this Product, Limited Warranty, and Limitation of Liability before using this product. If the terms are not acceptable THEN DO NOT USE THE PRODUCT; rather, return the unopened product within 15 days of purchase for a refund of the purchase price.

RISKS OF USING THIS PRODUCT

The Buyer and User (referred to collectively herein as “Buyer”) of this product should be aware that there are inherent unintended risks associated with the use of this product which are impossible to eliminate. These risks include, but are not limited to, injury to plants and ornamental crops to which this product is applied, lack of control of the target pests or weeds, resistance of the target pests or weeds to this product, injury caused by drift, and injury to rotational ornamental crops caused by carryover in the soil. Such risks of ornamental crop injury, non-performance, resistance or other unintended consequences are unavoidable and may result because of such factors as weather, soil conditions, disease, moisture conditions, irrigation practices, condition of the ornamental crop at the time of application, presence of other materials either applied in the tank mix with this product or prior to application of this product, cultural practices or the manner of use or application, (or a combination of such factors) all of which are factors beyond the control of Valent. The Buyer should be aware that these inherent unintended risks may reduce the harvested yield of the ornamental crop in all or a portion of the treated acreage, or otherwise affect the ornamental crop such that additional care, treatment and expense are required to take the ornamental crop to harvest. If the Buyer chooses not to accept these risks, THEN THIS PRODUCT SHOULD NOT BE APPLIED. By applying this product Buyer acknowledges and accepts these inherent unintended risks AND TO THE FULLEST EXTENT ALLOWED BY LAW, AGREES THAT ALL SUCH RISKS ASSOCIATED WITH THE APPLICATION AND USE ARE ASSUMED BY THE BUYER.

Valent shall not be responsible for losses or damages (including, but not limited to, loss of yield, increased expenses of farming the ornamental crop or such incidental, consequential or special damages that may be claimed) resulting from use of this product in any manner not set forth on the label. Buyer assumes all risks associated with the use of this product in any manner or under conditions not specifically directed or approved on the label.

LIMITED WARRANTY

Valent warrants only that this product conforms to the chemical description on the label and is reasonably fit for the purposes stated in the label, under average use conditions, when used strictly in accordance with the label and subject to the Risks of Using This Product as described above. **EXCEPT AS SET FORTH ABOVE, VALENT MAKES NO OTHER WARRANTIES, EITHER EXPRESSED OR IMPLIED.** No agent or representative of Valent or Seller is authorized to make or create any other express or implied warranty.

LIMITATION OF LIABILITY

To the fullest extent allowed by law, Valent or Seller is not liable for any incidental, consequential, indirect or special damages resulting from the use or handling of this product. The limitation includes, but is not limited to, loss of yield on all or any portion of the treated acreage, increased
(continued)

(continued)

care, treatment or other expenses required to take the ornamental crop to harvest, increased finance charges or altered finance ratings, emotional or mental distress and/or exemplary damages. **TO THE FULLEST EXTENT ALLOWED BY LAW, THE EXCLUSIVE REMEDY OF THE BUYER, AND THE EXCLUSIVE MAXIMUM LIABILITY OF VALENT OR SELLER FOR ANY AND ALL CLAIMS, LOSSES, INJURIES OR DAMAGES (INCLUDING CLAIMS BASED ON BREACH OF WARRANTY, CONTRACT, NEGLIGENCE, TORT, STRICT LIABILITY OR OTHERWISE) RESULTING FROM THE USE OR HANDLING OF THIS PRODUCT SHALL BE THE RETURN OF THE PURCHASE PRICE OF THIS PRODUCT OR, AT THE ELECTION OF VALENT OR SELLER, THE REPLACEMENT OF THE PRODUCT.**

PROMPT NOTICE OF CLAIM

Valent must be provided with prompt notice of any claim so that an immediate inspection of the affected property or plants can be made. To the extent applicable law allows such requirement, notice of a claim shall be given promptly to Valent, whether the claim is based on contract, negligence, strict liability, or other tort or otherwise be barred from any remedy.

NO AMENDMENTS

Valent and Seller offer this product, and Buyer accepts it, subject to the foregoing **Disclaimer, Risks of Using This Product, Limited Warranty** and **Limitation of Liability**, which may not be modified by any oral or written agreement.

TANK MIXES

NOTICE: Tank mixing or use of this product with any other product which is not specifically and expressly authorized by the label shall be the exclusive risk of user, applicator and/or application advisor.

Read and follow the entire label of each product to be used in the tank mix with this product.

Instructions for Using Water Soluble Packages Directly into Spray Tanks:

Water Soluble Packages (WSPs) are designed to dissolve in water. Agitation may be used, if necessary, to help dissolve the WSP. Failure to follow handling and mixing instructions can increase your exposure to the pesticide products in WSPs. WSPs, when used properly, qualify as a closed mixing/loading system under the Agricultural Worker Protection Standard [40 CFR 170.607(d)].

Handling Instructions

Follow these steps when handling pesticide products in WSPs.

1. Mix in spray tank only.
2. Handle WSP(s) in a manner that protects package from breakage and/or unintended release of contents. If package is broken, put on PPE required for clean-up and then continue with mixing instructions.
3. Keep the WSP(s) in outer packaging until just before use.
4. Keep the WSP dry prior to adding to the spray tank.
5. Handle with dry gloves and according to the label instructions for PPE.
6. Keep WSP intact. Do not cut or puncture WSP.
7. Reseal the WSP outer packaging to protect any unused WSP(s).

Mixing Instructions

Follow the steps below when mixing this product, including if tank mixed with other pesticide products. If being tank mixed, the mixing directions 1 through 9 below take precedence over the mixing directions of the other tank mix products. WSPs may, in some cases, be mixed with other pesticide products so long as the directions for use of all mixed products do not conflict. Do not tank mix this product with products that prohibit tank mixing or have conflicting mixing directions.

1. If a basket or strainer is present in the tank hatch, remove prior to adding the WSP to the tank.
2. Fill tank with water to approximately one-third to one-half of the desired final volume of spray.
3. Stop adding water and stop any agitation.
4. Place intact/unopened WSP(s) into the tank.
5. Do not spray water from a hose or fill pipe to break or dissolve the WSP(s).
6. Start mechanical and recirculation agitation from the bottom of tank without using any overhead recirculation, if possible. If overhead recirculation cannot be turned off, close the hatch before starting agitation.
7. Dissolving the WSP(s) may take up to 5 minutes or longer, depending on water temperature, water hardness and intensity of agitation.
8. Stop agitation before tank lid is opened.
9. Open the lid to the tank, exercising caution to avoid contact with dusts or spray mix, to verify that the WSPs have fully dissolved and the contents have been thoroughly mixed into the solution.
10. Do not add other allowed products or complete filling the tank until the bags have fully dissolved and pesticide is thoroughly mixed.
11. Once the WSP have fully dissolved and any other products have been added to the tank, resume filling the tank with water to the desired level, close the tank lid, and resume agitation.
12. Use the spray solution when mixing is complete.
13. Maintain agitation of the diluted pesticide mix during transport and application.
14. It is unlawful to use any registered pesticide, including WSPs, in a manner inconsistent with its label.

INFORMATION

• Intended for commercial use.

TetraSan 5 WDG is a miticide that controls major tetranychid mite species in egg and nymph stages of growth. Foliar applications of *TetraSan 5 WDG* can be made for control of spider mites infesting indoor (greenhouses, lathhouses, shadehouses and interiorscapes) and outdoor ornamentals, including flowering and foliage crops, ground covers, shrubs and ornamental trees, non-bearing fruit and nut trees, Christmas trees and indoor tomato production (greenhouses, lathhouses and shadehouses). *TetraSan 5 WDG* may be used in ornamental production areas and in the landscape in residential and commercial areas. *TetraSan 5 WDG* exhibits strong translaminar movement within plant leaves. Spray contacting the upper surface of leaves will absorb into the leaves and locally translocate within the leaf. Thus mites feeding on the undersides of leaves will be controlled.

IMPORTANT: Applications of *TetraSan 5 WDG* may be made to a wide range of ornamental plants. To ensure that *TetraSan 5 WDG* is compatible with the variety or cultivar under your specific conditions, test the product on a limited scale and observe for phytotoxicity for two weeks before making large scale applications. The large number of existing ornamental varieties and cultivars coupled with the constant introduction of new varieties makes it impossible to field test *TetraSan 5 WDG* in every locale where sold or in all of the combinations created by differences in growing practices. Factors that can influence phytotoxicity to any applied pesticide include soil or media type, pH, moisture or fertility,

environmental conditions such as temperature, lighting or degree days and horticultural practices including planting dates, control of other pests, and timing of various horticultural practices. *TetraSan 5 WDG* has not been tested in tank mix combinations, sequential pesticide treatments or with various adjuvants and surfactants. Do not apply to Poinsettia after bract formation.

MANAGING MITE RESISTANCE

Repeated use of the same class of miticides or miticides with similar modes of action can lead to the build up of resistant mite strains. For optimum resistance management, apply *TetraSan 5 WDG* no more than two times per cropping cycle (start to finish for one ornamental crop) or no more than two times per six months. *TetraSan 5 WDG* should be used in alternation with other miticide materials possessing dissimilar modes of action and/or with other chemical classes of miticides. Due to its unique chemistry and mode of action, *TetraSan 5 WDG* can be used in rotation with all other registered miticides in IPM and resistance management programs. Follow local, state and federal Integrated Pest Management (IPM) and Resistance Management (RM) recommendations. Read and follow all product labels before applying any miticide.

SPRAY EQUIPMENT

Thoroughly clean spray equipment prior to mixing and applying *TetraSan 5 WDG*. Thoroughly rinse the spray tank, spray boom and all nozzles before adding *TetraSan 5 WDG* to the tank. Apply *TetraSan 5 WDG* using equipment such as compressed air sprayers, hydraulic sprayers, or ground boom sprayers.

TANK MIXING

It is the pesticide user's responsibility to ensure that all products are registered for the intended use. Read and follow the applicable restrictions and limitations and directions for use on all product labels involved in tank mixing. Users must follow the most restrictive directions for use and precautionary statements of each product in the tank mixture.

PREPARATION OF SPRAY SOLUTION

To prepare spray solution, drop the unopened packet(s) of *TetraSan 5 WDG* into a spray tank containing at least one-half the total quantity of water required. Direct water at the floating packet(s) and continue to add water with the agitator running until the spray volume is reached. Do not add any liquid fertilizers, micronutrients or adjuvants to the spray solution until after the water soluble packets and their contents have completely dissolved. Water soluble packet(s) should completely dissolve in approximately five minutes. Dissolution rate may be slowed by cold water, lack of agitation or water containing high concentrations of boron or sulfur. High concentration of boron or sulfur may result in spray screen or nozzle clogging due to the incomplete dissolution of the water soluble packet material. Continuous agitation is required to keep the product in suspension.

COMPATIBILITY

Before mixing *TetraSan 5 WDG* with other insecticide products, test mix small portions of products in a small quantity to ensure compatibility.

DIRECTIONS FOR USE ON ORNAMENTAL PLANTS

CROP	PESTS	PRODUCT RATE	SPECIAL INSTRUCTIONS
Ornamental Plants Including: Bedding Plants Flowering Plants Foliage Plants Ground Covers Non-Bearing Fruit Trees Non-Bearing Nut Trees Ornamentals Ornamental Trees Shrubs	Spider Mites Including: Citrus Red Mite European Red Mite Lewis Spider Mite Pacific Spider Mite Southern Red Mite Spruce Spider Mite Two-spotted Spider Mite	8 to 16 oz/ 100 gallons 4 to 8 packets/ 100 gallons 16 to 32 oz/A (Each water soluble packet contains 2 oz of <i>TetraSan 5 WDG.</i>)	Mix with sufficient water and apply as a foliar spray to obtain uniform coverage. <i>TetraSan 5 WDG</i> kills mite eggs (ovicidal) and nymphs, but not adult mites. For best control, apply at first sign of infestation and before large numbers of adult mites are present. Make a second application if necessary, but no sooner than 14 days after the first application. <i>TetraSan 5 WDG</i> is transovarial, meaning that treated adult mites will not produce viable eggs. Use higher rates for moderate to heavy infestations, especially with dense plant canopies. If rapid control (<7 days) of adult mites is required, apply <i>TetraSan 5 WDG</i> in combination with a contact adjuvant.

IMPORTANT: Since ornamental varieties are numerous, constantly changing, and may react differently to *TetraSan 5 WDG* and tank mixtures, test the product(s) on a small scale before making large-scale applications.

Restrictions

- Do not apply *TetraSan 5 WDG* more than two times per cropping season or within a six month period.
- Do not apply this product through any type of irrigation or chemigation system.

DIRECTIONS FOR USE ON CHRISTMAS TREES

CROP	PESTS	PRODUCT RATE	SPECIAL INSTRUCTIONS
Christmas Trees	McDaniel Spider Mite Pacific Spider Mite Spruce Spider Mite Two-spotted Spider Mite	28 to 40 oz/A 14 to 20 packets/A (Each water soluble packet contains 2 oz of <i>TetraSan</i> 5 WDG.)	Apply by ground as full coverage spray or by air in a minimum of 10 gals/A. Coverage is critical for effective control. Best results are achieved when mite populations are low. <i>TetraSan</i> 5 WDG is predominately an ovicide/larvicide. Apply <i>TetraSan</i> 5 WDG at or prior to threshold for your area but not greater than the maximum rate listed. Do not use rates below 28 oz/A (0.09 lb ai/A) since it may result in poor control and contribute to the development of resistance to etoxazole among mite populations.
Restrictions <ul style="list-style-type: none">• Do not make more than one (1) <i>TetraSan</i> 5 WDG application per growing season.• Do not apply more than 40 oz <i>TetraSan</i> 5 WDG per acre per season.• Do not apply this product through any type of irrigation or chemigation system.			

DIRECTIONS FOR USE ON INDOOR GROWN TOMATOES

CROP	PESTS	PRODUCT RATE	SPECIAL INSTRUCTIONS
Indoor Grown Tomatoes	Spider Mites Including: Citrus Red Mite European Red Mite Lewis Spider Mite Pacific Spider Mite Southern Red Mite Spruce Spider Mite Two-spotted Spider Mite	8 to 20 oz/ 100 gallons 4 to 10 packets/ 100 gallons 16 to 40 oz/A (Each water soluble packet contains 2 oz of <i>TetraSan 5 WDG.</i>)	Mix with sufficient water and apply as a foliar spray to obtain uniform coverage. When applied as a high volume spray, 100 gallons of spray solution will treat approximately 20,000 sq ft. <i>TetraSan 5 WDG</i> kills mite eggs (ovicidal) and nymphs, but not adult mites. For best control, apply at first sign of infestation and before large numbers of adult mites are present. Make a second application if necessary, but no sooner than 21 days after the first application. <i>TetraSan 5 WDG</i> is transovarial, meaning that treated adult mites will not produce viable eggs. Use higher rates for moderate to heavy infestations, especially with dense plant canopies. If rapid control (< 7 days) of adult mites is required, apply <i>TetraSan 5 WDG</i> in combination with a contact adulticide.

IMPORTANT: Since tomato varieties are numerous, constantly changing and may react differently to *TetraSan 5 WDG* and tank mixtures, test the product(s) on a small scale before making large-scale applications.

Restrictions

- Do not apply within one (1) day of harvest.
- Do not make more than two (2) *TetraSan 5 WDG* applications per cropping season.
- Do not exceed 80 oz *TetraSan 5 WDG* (0.27 lb ai) per acre per cropping season.
- Do not apply *TetraSan 5 WDG* more than two times per cropping season.
- Do not apply more than 40 oz per acre per application.
- Do not use with an adjuvant or surfactant.
- Do not apply this product through any type of irrigation or chemigation system.

STORAGE AND DISPOSAL

Do not contaminate water, food or feed by storage, disposal or cleaning of equipment.

PESTICIDE STORAGE

Keep pesticide in original container.

Store in a cool, dry, secure place.

Do not put formulation or dilute spray solution into food or drink containers.

Do not contaminate food or foodstuffs.

Do not store or transport near feed or food.

Not for use or storage in or around the home.

For help with any spill, leak, fire or exposure involving this material, call day or night (800) 892-0099.

PESTICIDE DISPOSAL

Wastes resulting from the use of this product may be disposed of on site or at any approved waste disposal facility.

CONTAINER DISPOSAL

Nonrefillable outer bag. Do not reuse or refill the outer bag. Completely empty bag into application equipment. Then dispose of empty bag in a sanitary landfill or, other procedures allowed by State and local authorities.

TetraSan and Products That Work, From People Who Care are registered trademarks of Valent U.S.A. LLC

©2022 Valent U.S.A. LLC



Grow a better tomorrow.

Distributed by:
Nufarm Americas Inc.
11901 S. Austin Ave.
Alsip, IL 60803

Manufactured for
Valent U.S.A. LLC

P.O. Box 5075
San Ramon CA 94583
Made in U.S.A.
Form 1453-H
EPA Reg. No. 59639-108
EPA Est. 67545-AZ-1
059639-00108.20201102.TET.AMEND.FINAL
SAL20201104

Information contained in this booklet is accurate at the time of printing. Since product testing is a continuous process, please read and follow the directions on the product label for the most current directions and precautionary statements.

Always check with your state to verify state registration status or call 800-6-VALENT (682-5368).



For state registration and/or supplemental labels, please call or visit us online.

Products That Work, From People Who Care[®]
valent.com | 800-6-VALENT (682-5368)

Always read and follow label instructions.

©2022 Valent U.S.A. LLC. All rights reserved.
Printed in the U.S.A.

Date 8/23/21